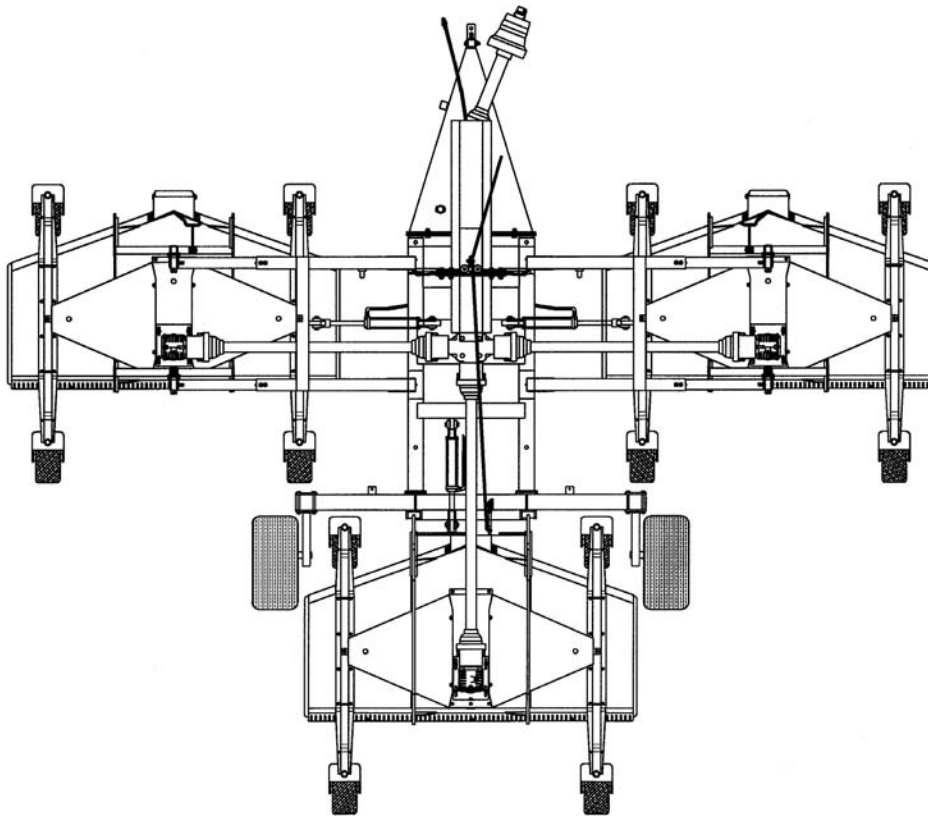


# **BEFCO®**

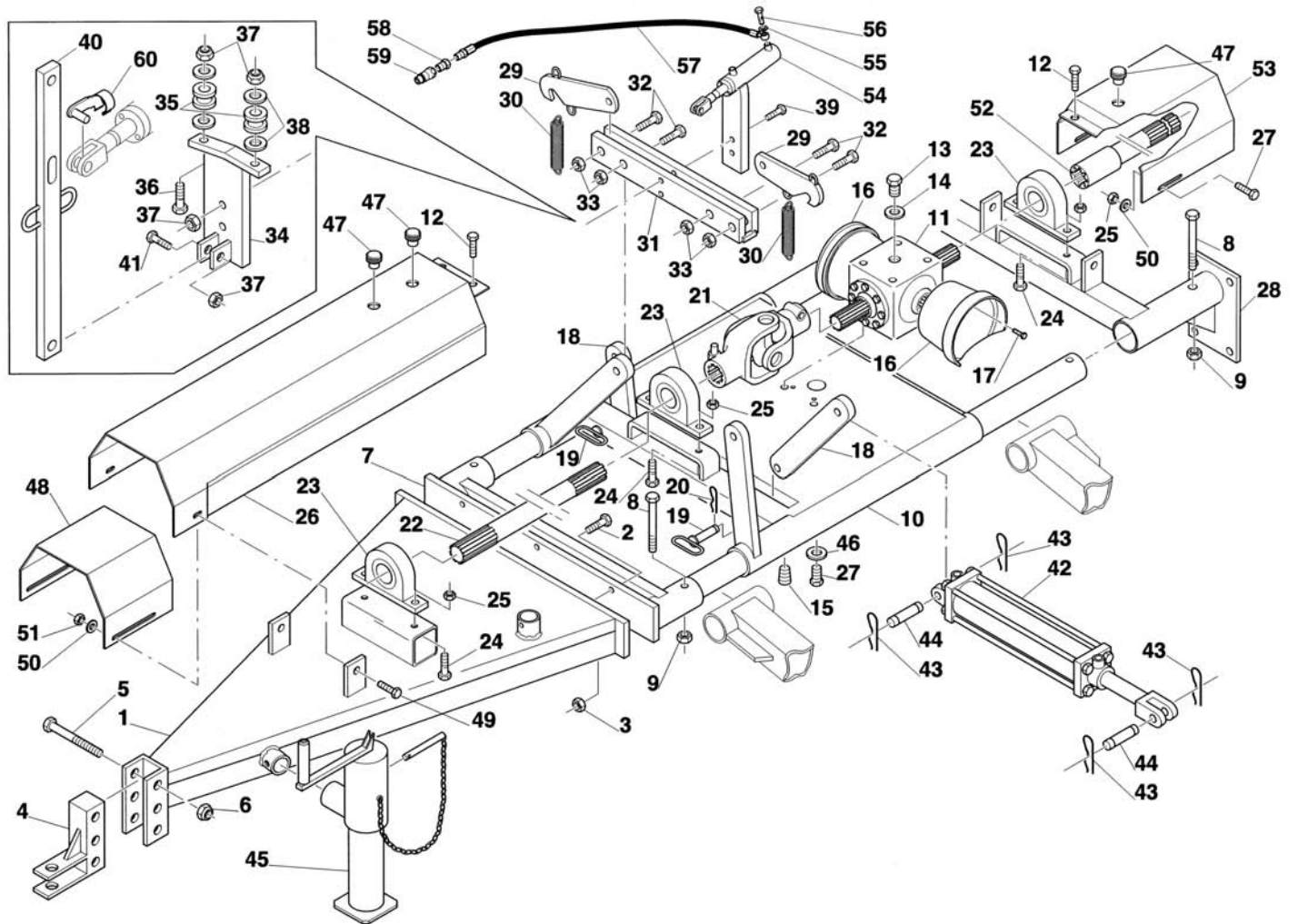
## **Parts Manual**

# **CYCLONE FLEX**

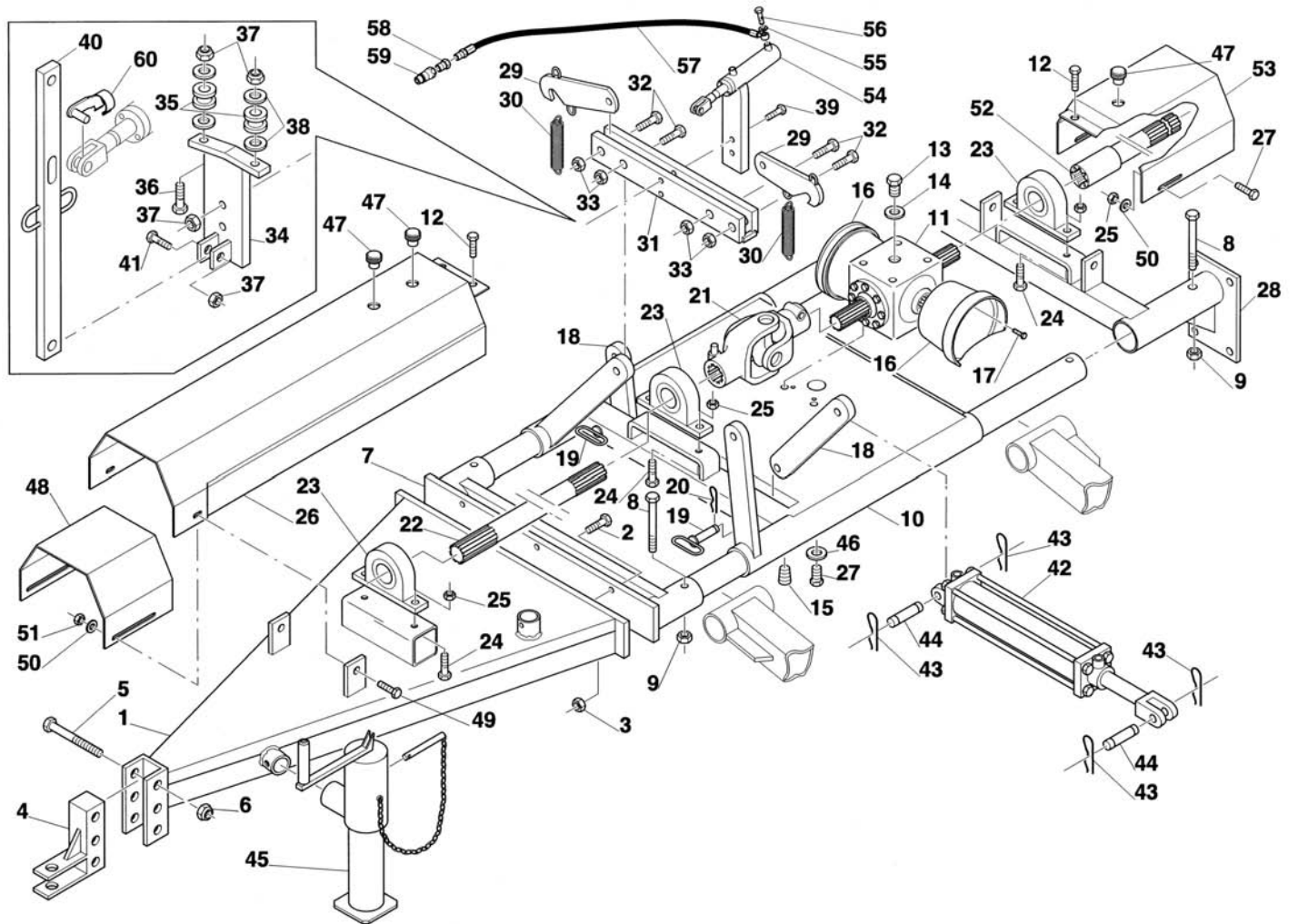
## **Tri-wing Grooming Mower 220-706**



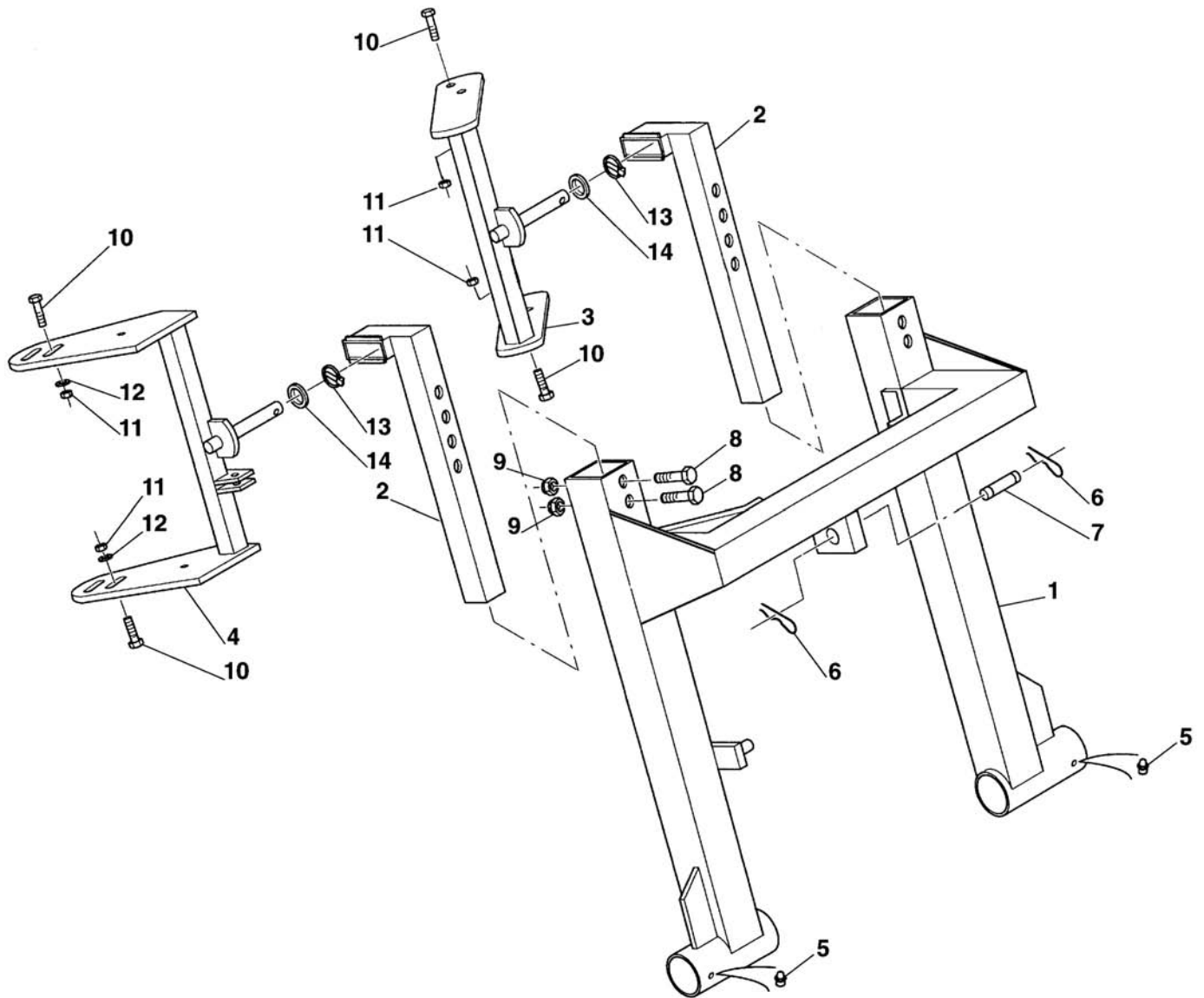
**Manual 971-160B  
July 2000**



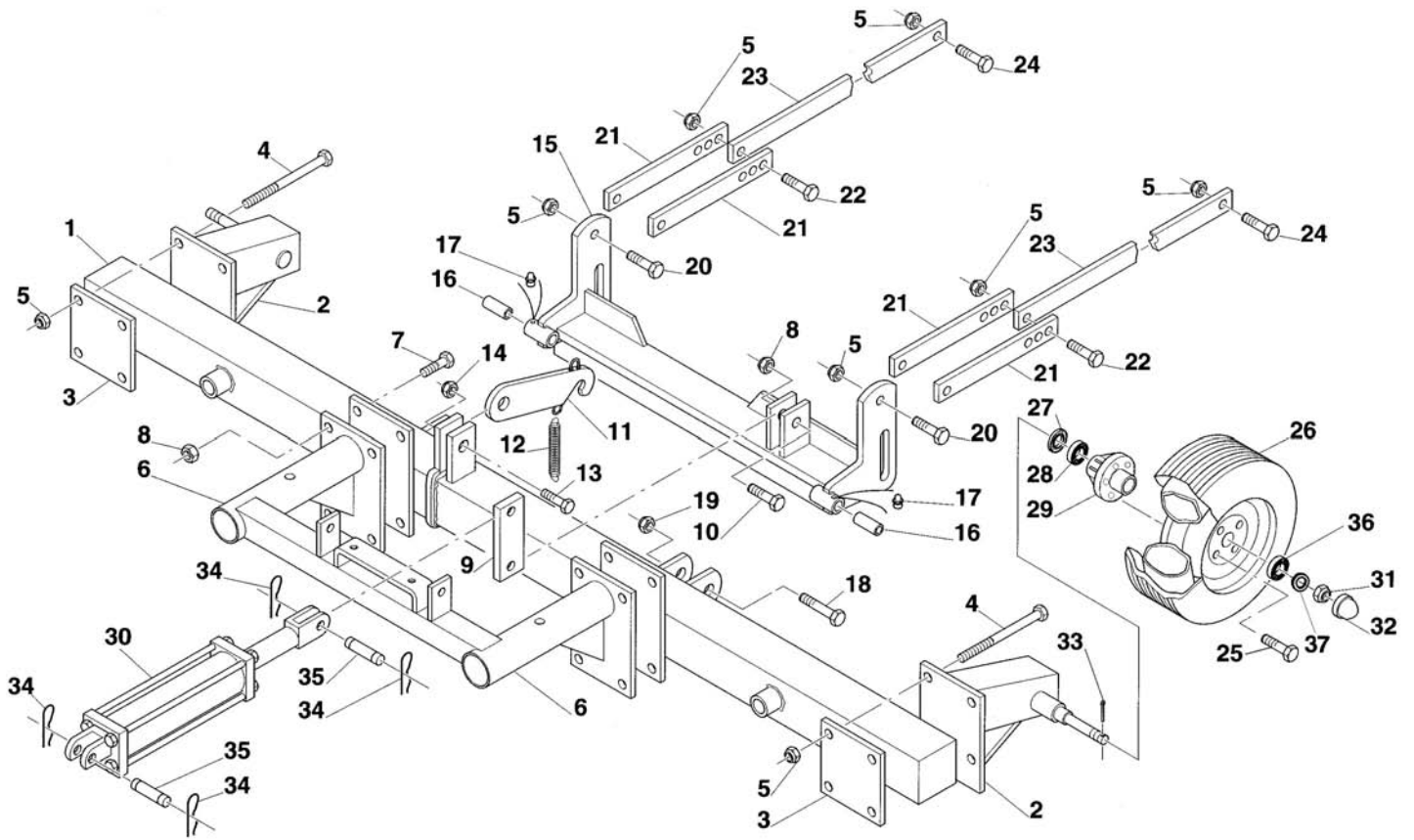
Ref.	Part #	Description	Qty.
1	002-3501	Drawbar 220-706	1
	002-3513	Drawbar 220-706; since 09-1998	1
2	006-4377	Bolt HH M18-2.50x45 C8.8 Z F	12
3	001-7506	Nut PT M18-2.50 C6 Z TK	12
4	000-9013	Front hitch	1
5	000-5536	Bolt HH M14-2.00x90 C8.8 Z P	2
6	003-0358	Nut PT M14-2.00 C6 Z TK	2
7	002-3521	Central frame hitch 220-706	1
8	002-3574	Bolt HH M16-2.00x120 C8.8 N P	4
9	000-2370	Nut HH M16-2.00 C6 N MD	4
10	002-3551	Main frame 220-706	1
11	050-0617	Gearbox, complete	1
12	006-4648	Bolt HH M12-1.75x20 C8.8 Z F	4
13	000-1107A	Breather cap	1
14	000-6691	Gasket	2
15	005-3446	Cap	1
16	000-8663	Shaft protection	2
17	000-6349	Bolt HH M10-1.50x20 C8.8 Z F	8
18	000-9173	Hitch plate	2
19	000-9201	Pin	2
20	009-1507	Hairpin cotter Ø4 Z	2
21	000-9264	Joint, double yoke	1
22	002-3762	Input shaft 220-706	1
	002-3761	Input shaft 220-706; since 09-1998	1
23	000-9223	Support UCP 207	3
24	002-3265	Bolt HH M12-1.75x40 C8.8 Z F	6
25	003-0064	Nut PT M12-1.75 C6 TK Z	8
26	002-3638	Protection, shaft 220-706	1
	002-3640	Protection, shaft 220-706; since 09-1998	1
27	000-3037	Bolt HH M12-1.75x25 C8.8 Z F	6
28	002-3564	Rear hitch 220-706	1
29	000-9721	Transport hook	3
30	005-1740	Spring	2
31	002-3661	Hook support plate 220-706	1
32	007-3513	Bolt HH M16-2.00x60 C8.8 Z F	4
33	000-5581	Nut PT M16-2.00 C6 Z TK	4
34	000-9731	Bracket, unlocking handle	1
35	000-9476	Pulley, nylon	2
36	003-0331	Bolt HH M10-1.50x50 C8.8 Z F	2
37	003-0156	Nut PT M10-1.50 C6 TK Z	5
38	000-2034	Washer flat Ø10 W	4
39	009-1281	Bolt HH M10-1.50x35 C8.8 Z F	2
40	000-9737	Unlocking handle	1
41	003-8614	Bolt HH M10-1.50x40 C8.8 Z F	1
42	503-034B	Hydraulic cylinder	3
43	502-172B	Clip hairpin 0.105"x2.00" Z	12
44	502-171B	Pin hyd. cyl. 1.00"x3.40" Z	6
45	502-098B	Stand	1
46	000-1077	Washer lock Ø12 Z	4
47	000-6647	Cap	3



Ref.	Part #	Description	Qty.
48	002-3639	Protection extension, input shaft 220-706	1
49	001-5255	Bolt HH M12-1.75x30 C8.8 Z F	2
50	007-6106	Washer fender Ø12 Z	4
51	009-4139	Nut ES M12-1.75 TN Z	2
52	002-3764	Input shaft, rear extension	1
53	002-3651	Protection, shaft rear extension	1
54	002-3962	Hydraulic cylinder, unlock kit (option)	1
55	005-7114	Washer copper sealing Ø14	1
56	005-7113	Bolt hollow M14-1.50x28 Z	1
57	005-7111	Tube R1 1/4"x2300	1
58	004-1873	Nipple 3/8"-1/2"	1
59	004-1871	Quick connector 1/2"	1
60	002-3964	Jack fixing pin	1

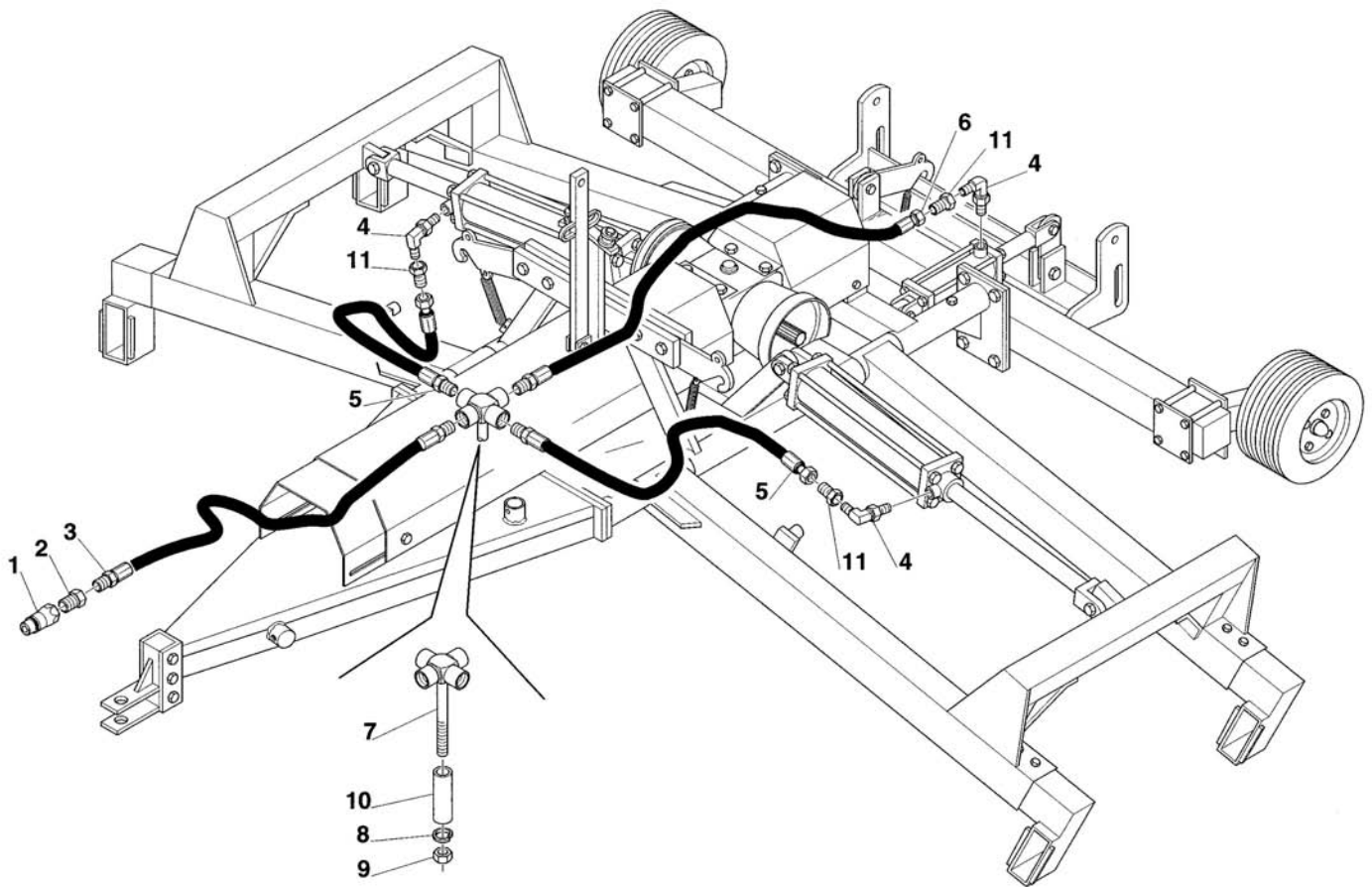


Ref.	Part #	Description	Qty.
1	012-3530	Frame, right lift; 220-706	1
	022-3530	Frame, left lift; 220-706	1
2	012-3841	Arm, right lift; 220-706	2
	022-3841	Arm, left lift; 220-706	2
3	002-3861	Rear hitch; 220-706	2
4	012-3851	Front hitch, right; 220-706	1
	022-3851	Front hitch, left; 220-706	1
5	000-6635	Grease fitting Ø6 press in	4
6	502-172B	Clip hairpin 0.105"x2.00" Z	6
7	502-171B	Pin hyd. cyl. 1.00"x3.40" Z	12
8	003-0285	Bolt HH M14-2.00x100 C8.8 Z P	8
9	003-0358	Nut PT M14-2.00 C6 Z TK	8
10	003-3218	Bolt HH M16-2.00x55 C8.8 Z P	16
11	000-2366	Nut HH M16-2.00 C6 Z TK	16
12	000-8568	Washer flat Ø16 W	8
13	001-8266	Lynch pin Ø11x45	4
14	000-9159	Washer flat Ø36 Y	4

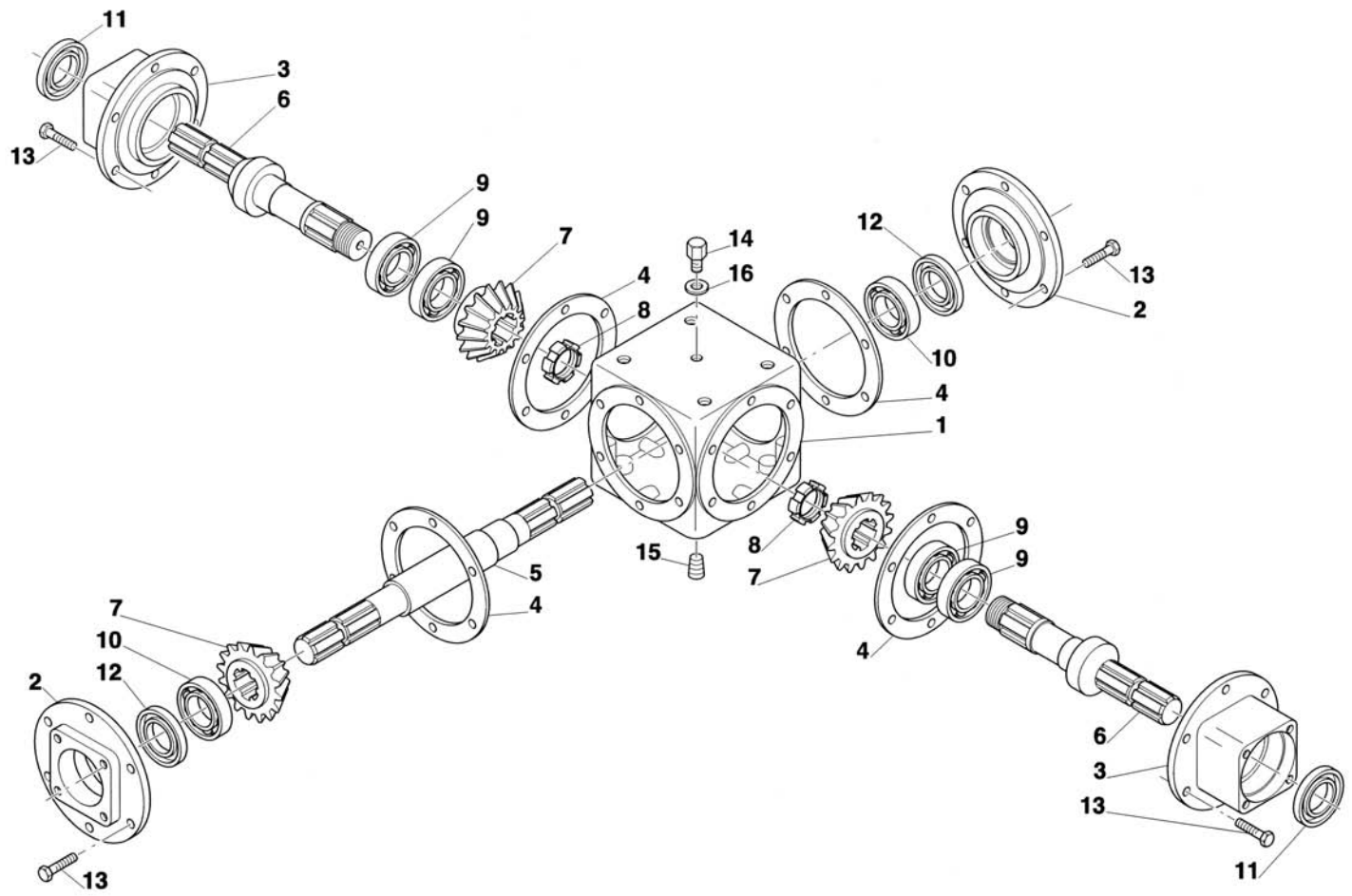




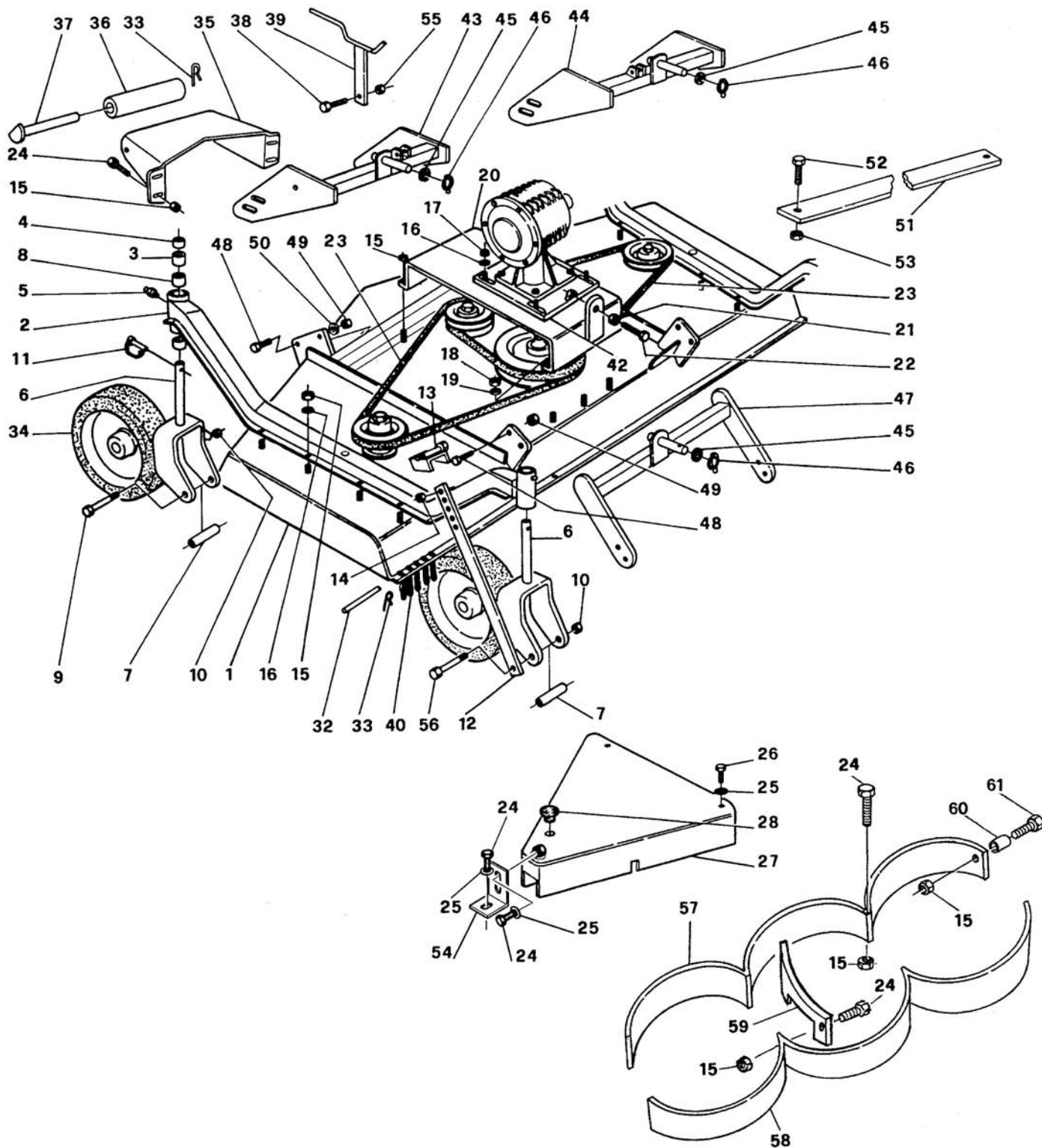
Ref.	Part #	Description	Qty.
1	002-3582	Frame, rear; 220-706	1
2	012-3711	Wheel support, right; 220-706	1
	022-3711	Wheel support, left; 220-706	1
3	000-9777	Back plate	2
4	000-6615	Bolt HH M14-2.00x140 C8.8 Z P	8
5	003-0358	Nut PT M14-2.00 C6 Z TK	14
6	002-3564	Rear hitch; 220-706	1
7	006-4377	Bolt HH M18-2.50x45 C8.8 Z F	8
8	001-7506	Nut PT M18-2.50 C6 Z TK	9
9	002-3752	Linkage, rear hydraulic cylinder; 220-706	1
10	002-6275	Bolt HH M18-2.50x70 C8.8 Z P	1
11	000-9721	Transport hook	3
12	000-9726	Spring	1
13	007-3513	Bolt HH M16-2.00x60 C8.8 Z F	1
14	000-5581	Nut PT M16-2.00 C6 Z TK	1
15	002-3791	Rear hitch; 220-706	1
16	000-9841	Spacer	2
17	000-6635	Grease fitting Ø6 press in	1
18	000-9843	Bolt HH M20-2.50x130 C8.8 Z P	2
19	000-5507	Nut PT M20-2.50 C6 TK Z	2
20	000-1018	Bolt HH M14-2.00x45 C8.8 Z P	2
21	000-9194	Tie rod joint	4
22	000-1526	Bolt HH M14-2.00x35 C8.8 Z F	2
23	002-3811	Tie rod, rear; 220-706	2
24	008-5168	Bolt HH M16-2.00x30 C8.8 Z F	2
25	503-486B	Bolt LUG 1/2"-20x1.50" G5 Z	12
26	170-8006	Wheel	2
27	503-480B	Oil seal TCM 15262 VH	2
28	503-481B	Bearing LM 48548/10	2
29	503-487B	Hub, wheel	2
30	503-034B	Hydraulic cylinder	1
31	503-484B	Nut, spindle	2
32	503-479B	Grease cap, wheel	2
33	503-485B	Pin cotter 5/32"x1.5" N	2
34	502-172B	Clip hairpin 0.105"x2.00" Z	4
35	502-171B	Pin hyd. cyl. 1.00"x3.40" Z	2
36	503-482B	Bearing LM 67048/10	2
37	503-483B	Washer flat Ø24 Z	2



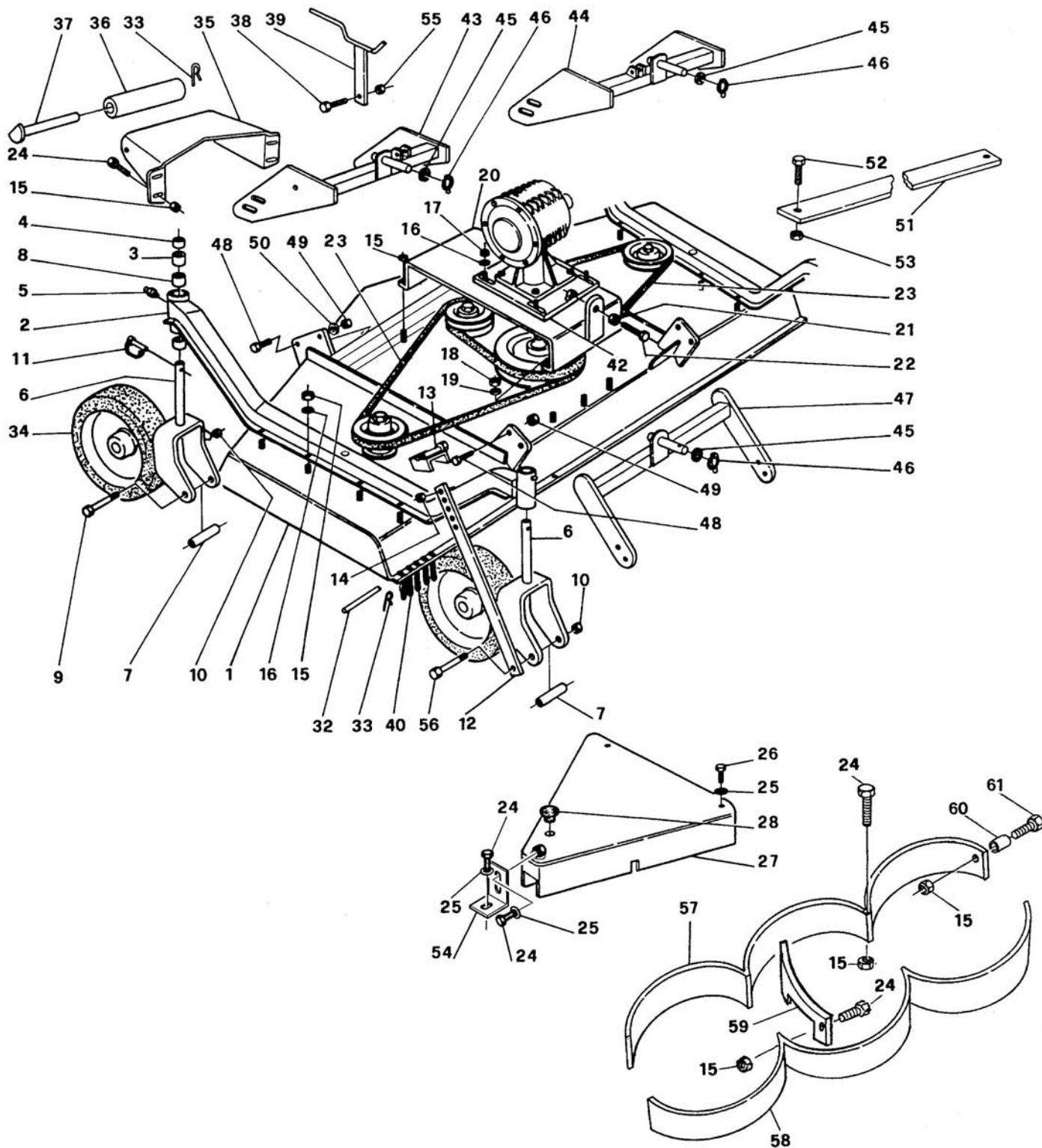
Ref.	Part #	Description	Qty.
1	502-170B	1/2" quick connect nipple 1/2" FP	1
2	502-169B	Reducer 3/8"-1/2"	1
3	502-166B	Hydraulic hose 87", front	1
4	502-163B	90° OR fitting	3
5	502-168B	Hydraulic hose 39", side	2
6	503-477B	Hydraulic hose 79", rear	1
7	502-165B	Hyd. cross 3/8" MNPT	1
8	000-1077	Washer lock Ø12 Z	1
9	000-3038	Nut HH M12-1.75 C6 Z TK	1
10	002-1285	Spacer	1
11	502-164B	Adaptor 3/8" NPT with 1/16" restrictor	3



Ref.	Part #	Description	Qty.
1	000-9970	Housing, gearbox	1
2	000-9971	Front cover, gearbox housing	2
3	000-9972	Side support, gearbox housing	2
4	003-0193	Gasket 2/10	-
	013-0193	Gasket 5/10	-
5	000-9975	Input shaft	1
6	000-9976	Output shaft	2
7	000-9973	Ring gear	3
8	003-7098	Locking ring ES GUK M35-1.50	2
9	003-0201	Bearing 30208	4
10	000-7172A	Bearing 30207	2
11	000-7094	Oil seal 52.85.10	2
12	000-9974	Oil seal 35.55.10	2
13	000-1241	Bolt HH M10-1.50x25 C8.8 N F	24
14	000-1107A	Breather cap	1
15	005-3446	Drain plug	1
16	000-6691	Gasket	1
	050-0617	Main gearbox, complete	-

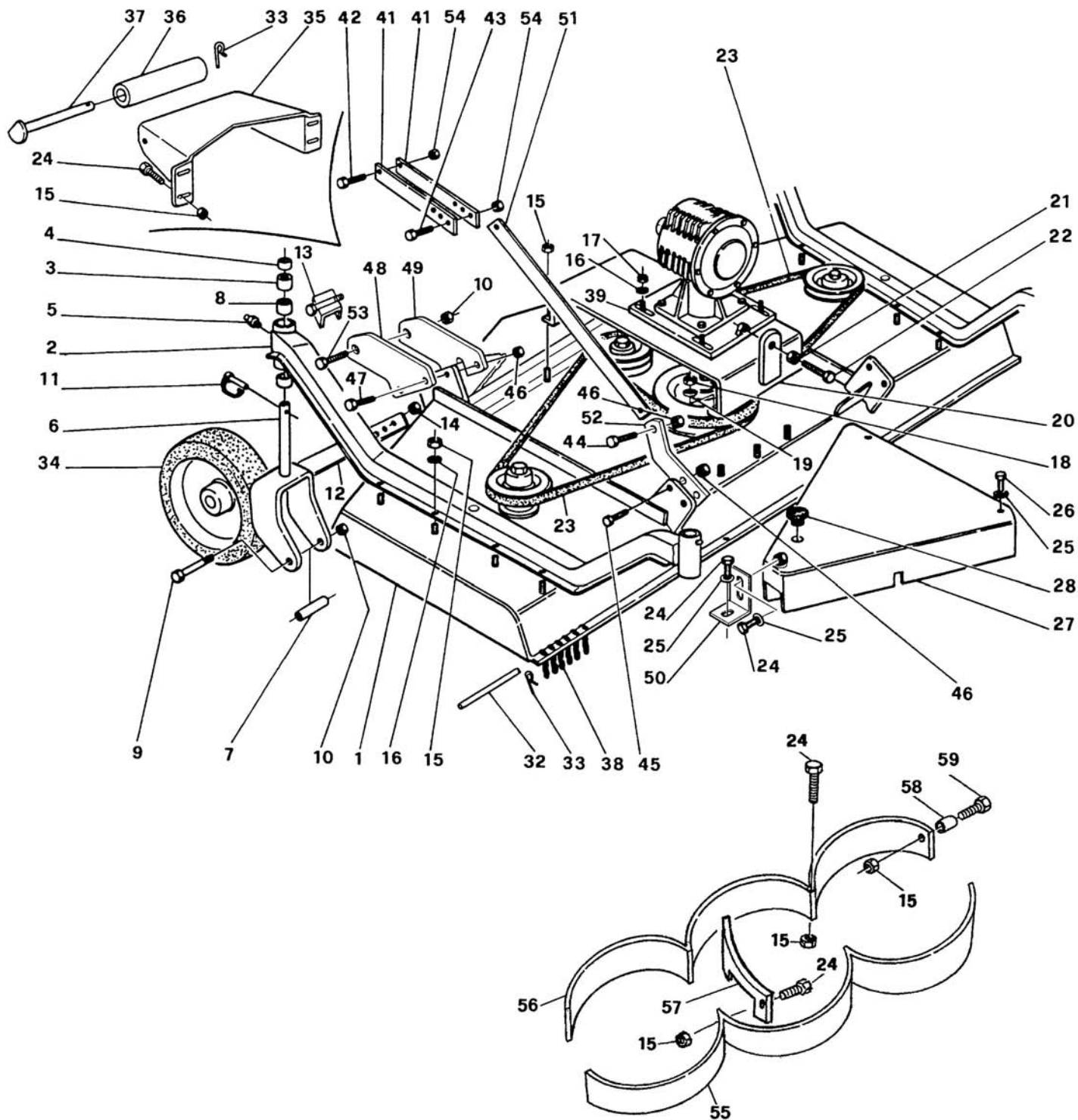


Ref.	Part #	Description	Qty.
1	040-6900	Frame 7' deck	2
2	002-3895	Wheel arm 7' deck; 220-706	2
3	004-4129	Spacer 1"	12
4	006-7311	Spacer 1/4"	4
5	000-1065	Grease fitting M10-1.00	4
6	006-7371	Wheel yoke	4
7	006-7377	Inner spacer	4
8	004-4130	Spacer 1/2"	4
9	002-3911	Bolt HH M20-2.50x230 C8.8 Z P	3
10	000-5507	Nut PT M20-2.50 C6 TK Z	4
11	004-4139	Lynch pin Ø10x46	4
	000-8783	Pin, wheel yoke; since 07-1999	4
12	002-3774	Locking plate	1
13	002-3776	Wheel support	1
14	000-1177	Nut HH M14-2.00 C6 MD Z	2
15	003-0156	Nut PT M10-1.50 C6 TK Z	22
16	003-0157	Washer fender Ø10 Z	20
17	001-4106	Nut ES M10-1.50 Z TK	4
18	000-1279	Nut HH M10-1.50 C6 TK Z	3
19	000-1280	Washer lock Ø10 Z	3
20	000-6814	Central plate, 7' deck	2
21	000-1106	Nut HH M12-1.75 C6 Z MD	4
22	000-6547	Bolt HH M12-1.75x100 C8.8 Z F	2
23	000-6694	Belt 5VX1000	2
24	000-6349	Bolt HH M10-1.50x20 C8.8 Z F	12
25	000-2034	Washer flat Ø10 W	12
26	003-3176	Bolt HH M10-1.50x25 C8.8 Z F	4
27	002-3901	Belt shield 7' deck, 220-706	2
28	000-6647	Cap	3
32	040-6762	Chain rod 7' deck	1
33	004-4156	Cotter pin Ø4x25	3
34	008-4673	Wheel, air tire	4
	002-3929A	Bearing, air tire (not shown)	8
	002-3930A	Retainer, air tire (not shown)	8
35	000-9622	Front roller support	1
36	006-7358	Roller 3"	1
37	006-7363	Roller pin	1
38	000-7716	Bolt HH M12-1.75x45 C8.8 Z F	2
39	002-3781	Kick-out bracket	1
40	000-6764	Chain link	71
42	000-6541	Gearbox support plate	1
43	022-3851	Front hitch, left 7' deck: 220-706	1
44	012-3851	Front hitch, right 7' deck: 220-706	1
45	000-8568	Washer flat Ø16 W	4
46	001-8266	Lynch pin Ø11x45	4
47	002-3861	Rear hitch	2
48	003-3218	Bolt HH M16-2.00x55 C8.8 Z P	16
49	000-2366	Nut HH M16-2.00 C6 Z TK	16
50	000-8568	Washer flat Ø16 W	8
51	002-3790	Safety tie rod; 220-706	1
52	002-3265	Bolt HH M12-1.75x40 C8.8 Z F	2

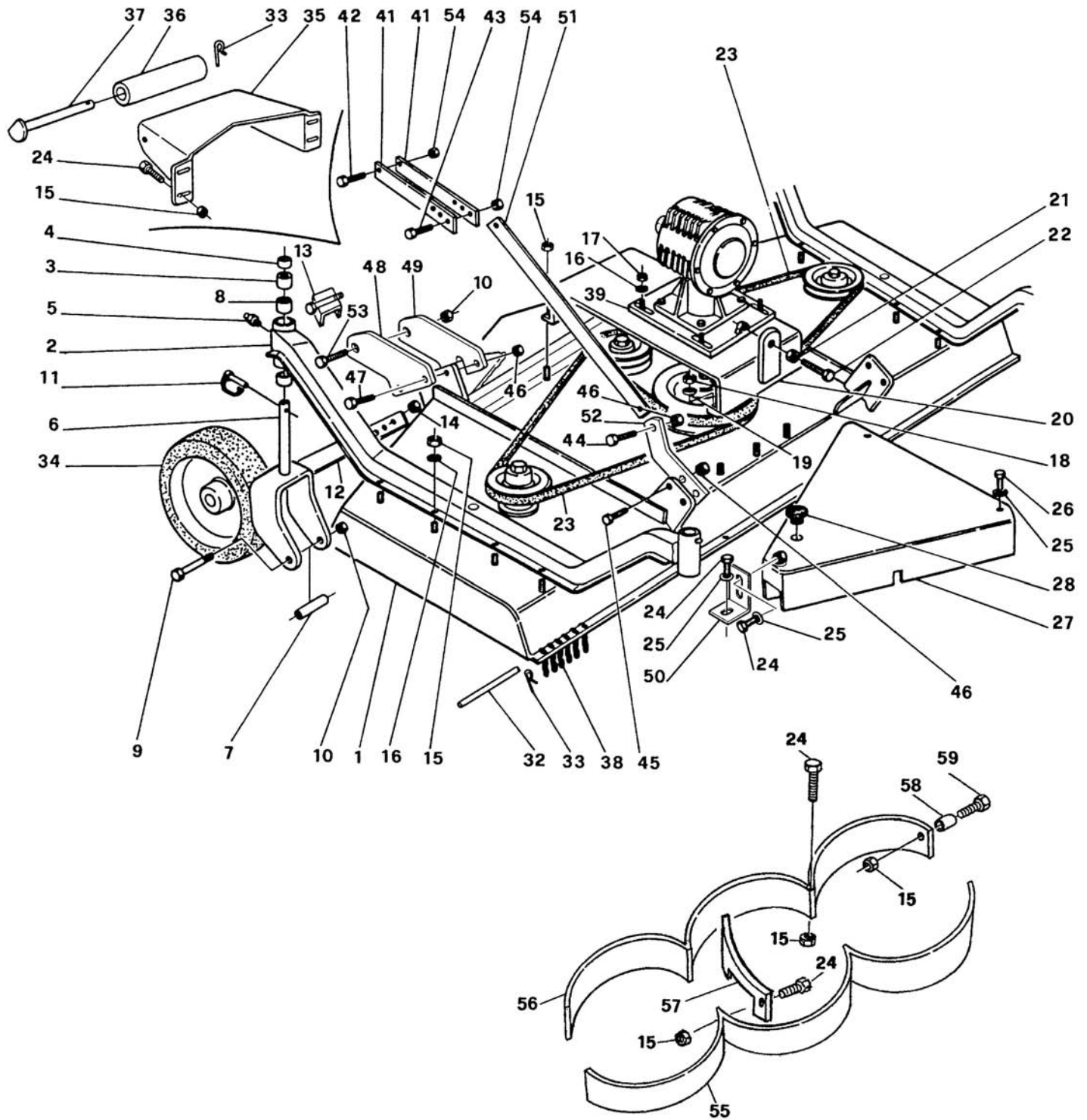




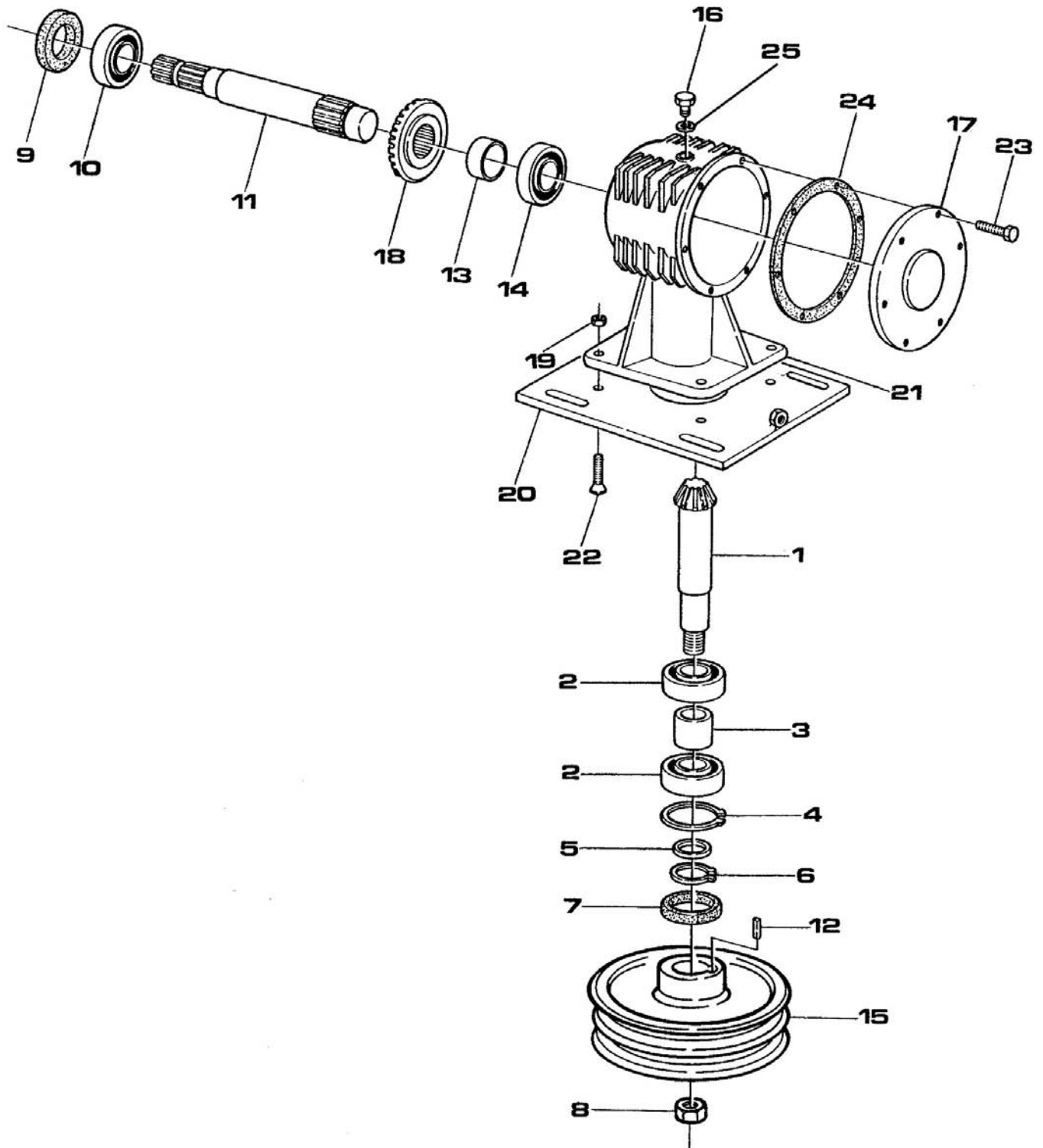
<b>Ref.</b>	<b>Part #</b>	<b>Description</b>	<b>Qty.</b>
53	000-3038	Nut HH M12-1.75 C6 Z TK	2
54	002-3903	Support bracket, belt shield	2
55	003-0064	Nut PT M12-1.75 C6 TK Z	2
56	002-3927	Bolt HH M20-2.50x250 C8.8 Z P	1
57	000-6801	Baffling front, 7' deck mulching kit (option)	1
58	000-6806	Baffling rear, 7' deck mulching kit (option)	1
59	000-6865	Guard support, 7' deck mulching kit (option)	2
60	000-3038	Nut HH M12-1.75 C6 Z TK	2
61	003-8614	Bolt HH M10-1.50x40 C8.8 Z F	2



Ref.	Part #	Description	Qty.
1	040-6900	Frame 7' deck	1
2	002-3895	Wheel arm 7' deck; 220-706	2
3	004-4129	Spacer 1"	12
4	006-7311	Spacer 1/4"	4
5	000-1065	Grease fitting M10-1.00	4
6	006-7371	Wheel yoke	4
7	006-7377	Inner spacer	4
8	004-4130	Spacer 1/2"	8
9	002-3911	Bolt HH M20-2.50x230 C8.8 Z P	2
9B	002-3927	Bolt HH M20-2.50x250 C8.8 Z P	2
10	000-5507	Nut PT M20-2.50 C6 TK Z	4
11	004-4139	Lynch pin Ø10x46	4
	000-8783	Pin, wheel yoke; since 07-1999	4
12	002-3774	Locking plate	2
13	002-3776	Wheel support	2
14	000-1177	Nut HH M14-2.00 C6 MD Z	4
15	003-0156	Nut PT M10-1.50 C6 TK Z	23
16	003-0157	Washer fender Ø10 Z	20
17	001-4106	Nut ES M10-1.50 Z TK	4
18	000-1279	Nut HH M10-1.50 C6 TK Z	3
19	000-1280	Washer lock Ø10 Z	3
20	000-6814	Central plate, 7' deck	1
21	000-1106	Nut HH M12-1.75 C6 Z MD	2
22	000-6547	Bolt HH M12-1.75x100 C8.8 Z F	1
23	000-6694	Belt 5VX1000	2
24	000-6349	Bolt HH M10-1.50x20 C8.8 Z F	12
25	000-2034	Washer flat Ø10 W	12
26	003-3176	Bolt HH M10-1.50x25 C8.8 Z F	4
27	002-3901	Belt shield 7' deck, 220-706	2
28	000-6647	Cap	3
32	040-6762	Chain rod 7' deck	1
33	004-4156	Cotter pin Ø4x25	3
34	008-4673	Wheel, air tire	4
	002-3929A	Bearing, air tire (not shown)	8
	002-3930A	Retainer, air tire (not shown)	8
35	000-9622	Front roller support	1
36	006-7358	Roller 3"	1
37	006-7363	Roller pin	1
38	000-6764	Chain link	71
39	000-6541	Gearbox support plate	1
41	000-9194	Tie rod joint	4
42	000-1018	Bolt HH M14-2.00x45 C8.8 Z P	2
43	000-1526	Bolt HH M14-2.00x35 C8.8 Z F	2
44	008-5168	Bolt HH M16-2.00x30 C8.8 Z F	2
45	003-2687	Bolt HH M16-2.00x40 C8.8 Z F	4
46	000-5581	Nut PT M16-2.00 C6 Z TK	12
47	003-0309	Bolt HH M16-2.00x70 C8.8 Z F	4
48	022-3831	Hitch plate, outer	2
49	012-3831	Hitch plate, inner	2
50	002-3903	Support bracket, belt shield	2
51	002-3811	Tie rod, rear	2



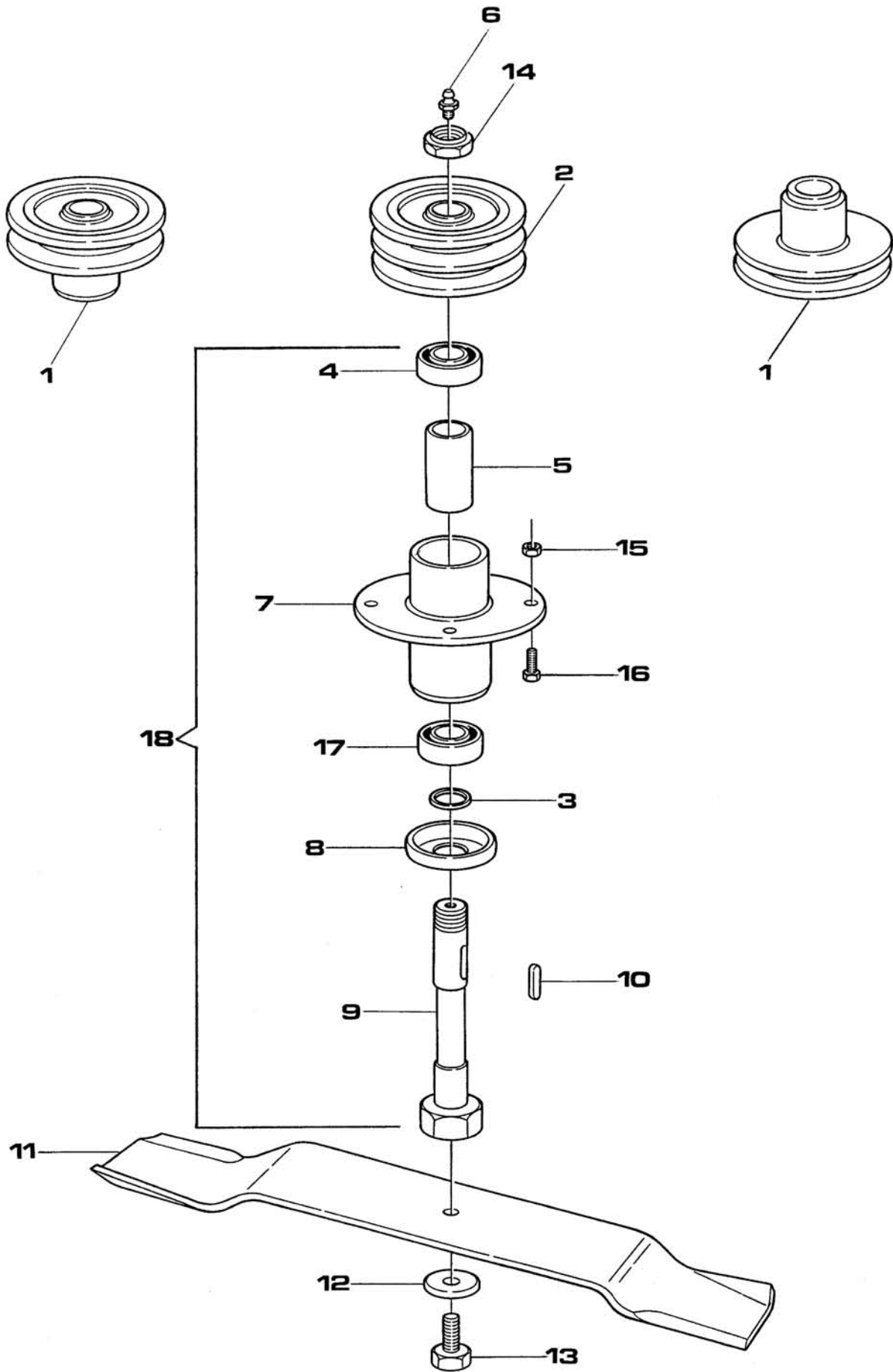
<b>Ref.</b>	<b>Part #</b>	<b>Description</b>	<b>Qty.</b>
52	002-3813	Rear bracket	2
53	002-3836	Bolt HH M20-2.50x70 C8.8 Z P	2
54	003-0358	Nut PT M14-2.00 C6 Z TK	4
55	000-6806	Baffling rear, mulching kit (option)	1
56	000-6801	Baffling front, mulching kit (option)	1
57	000-6865	Guard support, mulching kit (option)	2
58	000-3038	Nut HH M12-1.75 C6 Z TK	2
59	003-8614	Bolt HH M10-1.50x40 C8.8 Z F	2



Ref.	Part #	Description	Qty.
1	000-6676	Pinion gear, straight gears	1
2	001-2149A	Bearing 6208	2
3	000-6687	Spacer	1
4	000-1154	Snap ring, inner Ø80	1
5	000-6685	Shim Ø40x50x2.5	1
6	000-8138	Snap ring, outer Ø40	1
7	000-6684	Oil seal 40.80.10	1
8	000-6698	Nut SP M25-1.50 Z	1
9	000-2295	Oil seal 35.62.10	1
10	002-5332A	Bearing 6207	1
11	000-6657	Input shaft	1
12	000-6689	Key 8x7x30	1
13	000-6667	Rear spacer	1
	000-6661	Rear spacer; since 09-1997	1
14	000-2292	Bearing 6305	1
	004-4217	Bearing 30305; since 09-1997	1
15	000-6692	Pulley SPB 250x2	1
16	000-1107A	Breather cap	1
17	000-6656	Cover, gearbox housing	1
18	000-6677	Ring gear, straight gears	1
19	003-0064	Nut PT M12-1.75 C6 TK Z	4
20	000-6541	Support plate, gearbox housing	1
21	000-6658	Housing, gearbox	1
22	004-6334	Bolt CS M12-1.75x45 C10.9 N F	4
23	000-6349	Bolt HH M10-1.50x20 C8.8 Z F	6
24	003-0193	Gasket 2/10	-
	013-0193	Gasket 5/10	-
25	000-6691	Gasket, aluminum	1
	050-0607	Gearbox 540 rpm, complete <sup>1</sup>	-
	050-0638	Gearbox 540 rpm, complete; since 09-1997 <sup>2</sup>	-

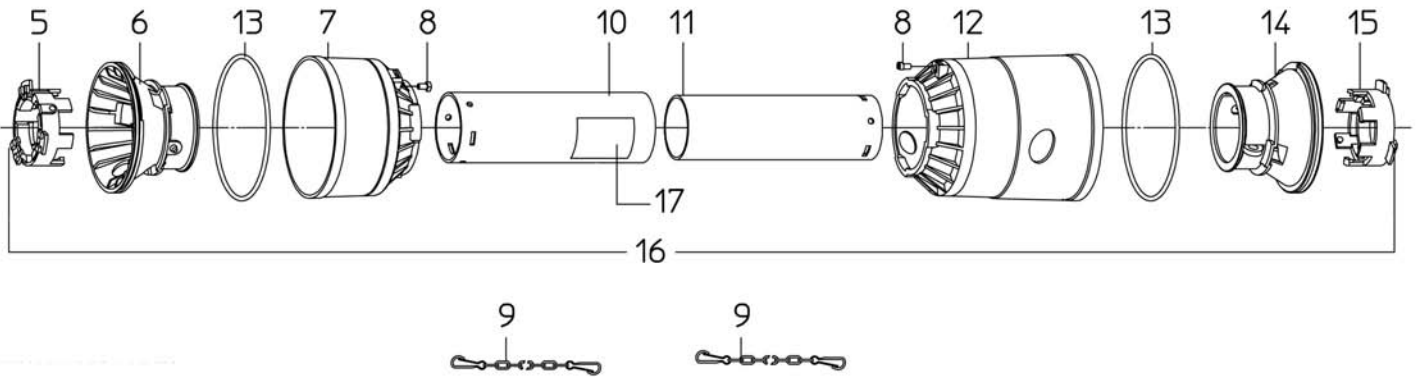
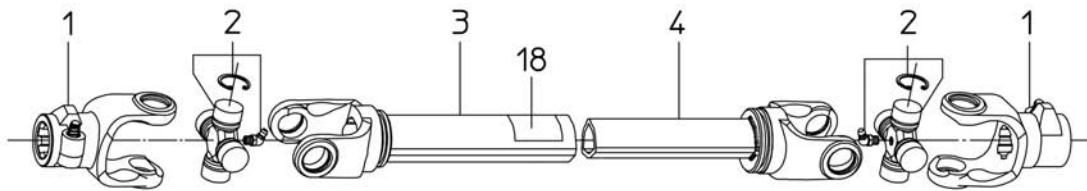
<sup>1</sup> Interchangeable with complete gearbox #050-0642.

<sup>2</sup> Interchangeable with complete gearbox #050-0642.



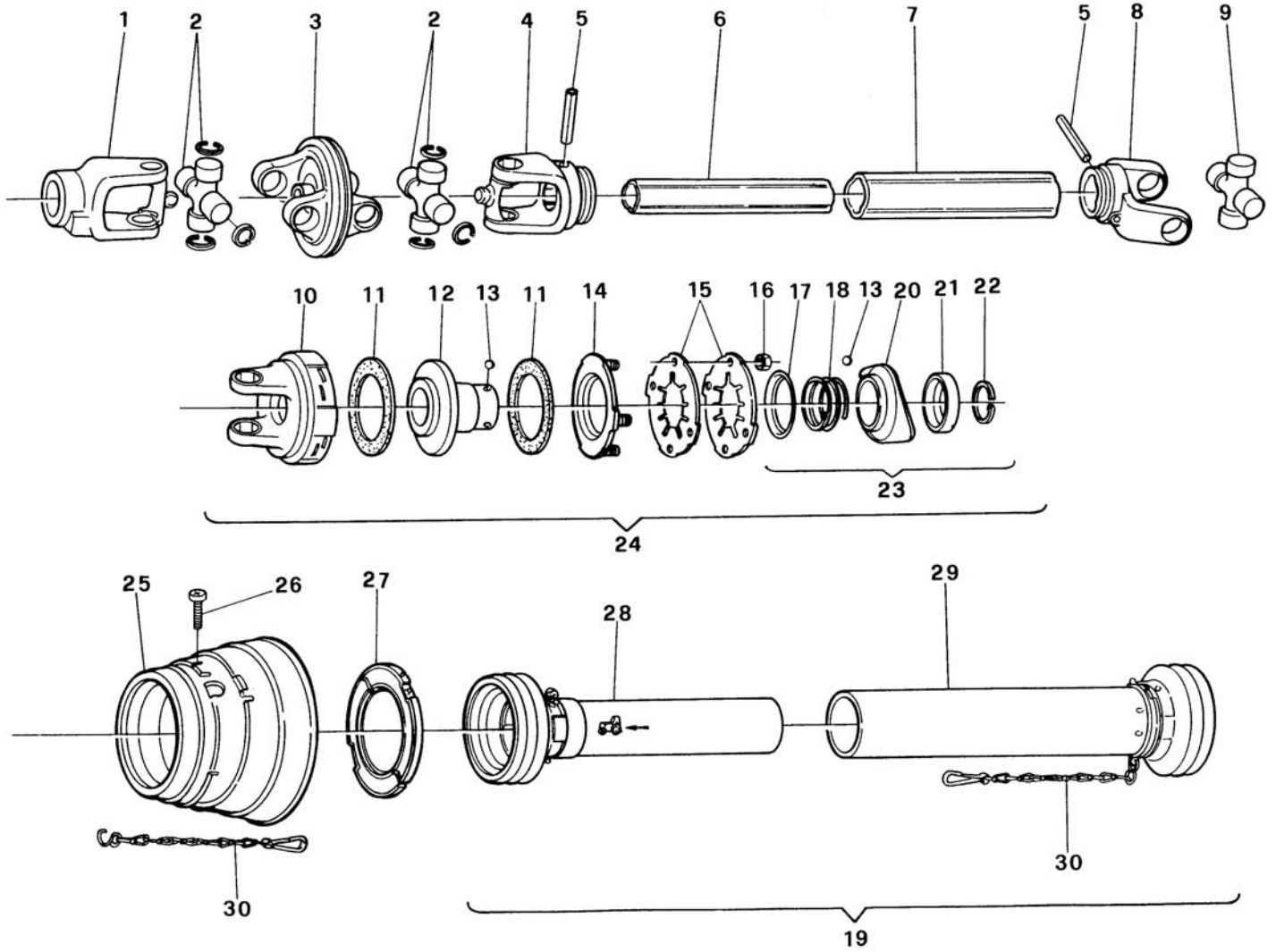


Ref.	Part #	Description	Qty.
1	000-6862	Pulley SPB 190x1	2
2	000-6861	Pulley SPB 190x2	1
3	000-6606	Shim Ø25x35x2	3
4	000-6634A	Bearing 6205-Z	3
5	000-6640	Spacer	3
6	002-9036	Grease fitting Ø8 press in	3
7	000-6648	Rotor support	3
8	000-6636	Cover	3
9	000-6649	Blade holder shaft	3
10	000-6639	Key 7x8x25	3
11	000-6690	Blade, standard 7' deck	3
	000-6690M	Blade, mulching 7' deck (option)	3
	000-6690B	Blade, highlift 7' deck (option)	3
	000-6690F	Blade, flat 7' deck (option)	3
	000-6690G	Blade, gator 7' deck (option)	3
12	000-8560	Washer conical spring Ø18 Z	3
13	000-8559	Bolt blade SP M14-1.50x32	3
14	000-6698	Nut SP M25-1.50 Z	3
15	003-0156	Nut PT M10-1.50 C6 TK Z	12
16	000-1008	Bolt HH M10-1.50x30 C8.8 N F	12
17	000-6626A	Bearing 6205-ZZ	3
18	000-6629C	Spindle, complete	3

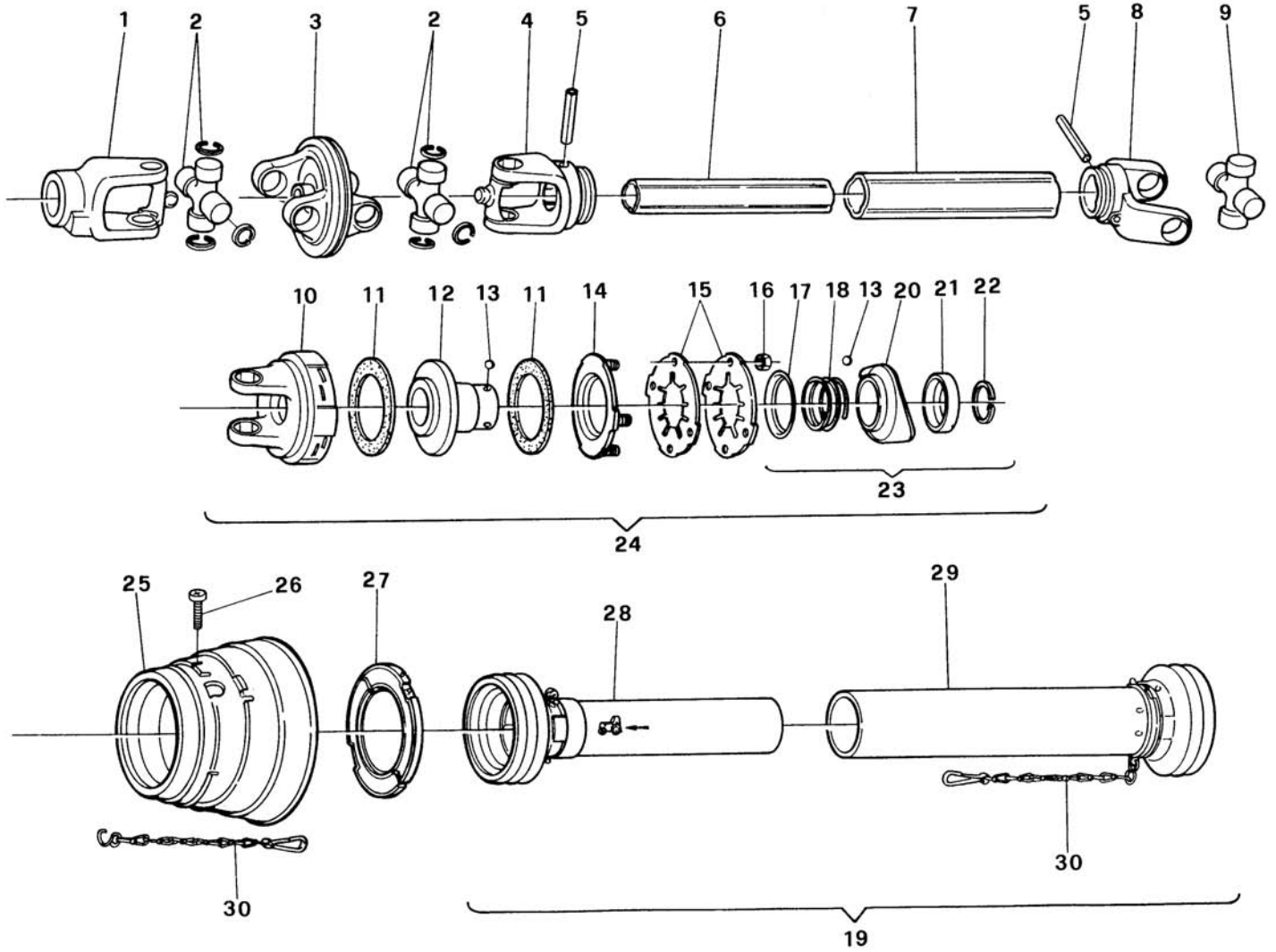


Ref.	Part #	Description	Qty.
1	1023010C	PTO yoke	1
2	1003020C	Cross & bearing	2
3	1943087NC	Outer tube	1
4	1953089NC	Inner tube	1
5	1784210C	Locking ring, outer tube	1
6	1784201C	Rigid cone, outer tube	1
7	1784203C	Standard cone	1
8	1784212C	Pin	2
9	1006065C	Chain, anti-rotation	2
10	1773085C	Shield, outer tube	1
11	1872085C	Shield, inner tube	1
12	1784205C	Long cone	1
13	1213233C	Stiffening ring	2
14	1784202C	Rigid cone, inner tube	1
15	1784211C	Locking ring, inner tube	1
16	90SL4085C	Shield, complete <sup>3</sup>	1
17	950-463B	Decal "DANGER - Rotating driveline, keep away", outer shield	1
18	950-464B	Decal "DANGER - Guard missing, do not operate", outer tube	1
	050-0464	Driveline, complete	-

<sup>3</sup> Complete shielding is interchangeable with part #96SL4085C.



Ref.	Part #	Description	Qty.
1	341579W	PTO yoke WWE 2480	1
2	342221W	Cross & bearing WWE 2480	2
3	365722W	Double yoke WWE 2480	1
4	341586W	Yoke WWE 2480	1
5	020617W	Roll pin WWE 2480	2
6	095400W	Inner tube WWE 2480	1
7	096890W	Outer tube WWE 2480	1
8	019519W	Yoke WWE 2480	1
9	312410W	Cross & bearing WWE 2480	1
10	321715W	Clutch housing WWE 2480	1
11	168556W	Friction disc	2
12	051551W	Rotor	1
13	020692W	Lock roller	6
14	381495W	Thrust plate	1
15	043489W	Disc spring	2
16	381957W	Nut	4
17	047825W	Back up ring	1
18	045793W	Spring	1
19	106724W	Shield, complete	1
20	045790W	Bushing	1
21	338531W	Back up ring	1
22	304149W	Snap ring	1
23	341953W	Quick disconnecting lock	1
24	321714W	Slip clutch, complete WWE 2480	1
25	172717W	Protection WWE 2480	1
26	365305W	Bolt	6
27	172715W	Bearing ring WWE 2480	1
28	183570W	Protection, outer WWE 2480	1
29	368508W	Protection, inner	1
30	044321W	Chain, anti-rotation	2
	050-0036	Main driveline WWE 2480, complete	-
	950-463B	Decal "DANGER - Rotating driveline, keep away" outer shield	1
	950-464B	Decal "DANGER - Guard missing, do not operate" outer tube	1



Ref.	Part #	Description	Qty.
1	366838W	PTO yoke WWE 2380	1
2	382701W	Cross & bearing WWE 2380	2
3	384517W	Double yoke WWE 2380	1
4	366862W	Yoke WWE 2380	1
5	020616W	Roll pin WWE 2380	2
6	046753W	Inner tube WWE 2380	1
7	054602W	Outer tube WWE 2380	1
8	041577W	Yoke WWE 2380	1
9	044444W	Cross & bearing WWE 2380	1
10	185836W	Clutch housing WWE 2380	1
11	168556W	Friction disc	2
12	051551W	Rotor	1
13	020692W	Lock roller	6
14	381495W	Thrust plate	1
15	043489W	Disc spring	2
16	381957W	Nut	4
17	047825W	Back up ring	1
18	045793W	Spring	1
19	106724W	Shield, complete	1
20	045790W	Bushing	1
21	338531W	Back up ring	1
22	304149W	Snap ring	1
23	341953W	Quick disconnecting lock	1
24	317189W	Slip clutch, complete WWE 2380	1
25	365715W	Protection WWE 2380	1
26	365305W	Bolt	6
27	365717W	Bearing ring WWE 2380	1
28	185530W	Protection, outer WWE 2380	1
29	368508W	Protection, inner	1
30	044321W	Chain, anti-rotation	2
	050-0040	Main driveline WWE 2380, complete	-
	950-463B	Decal "DANGER - Rotating driveline, keep away" outer shield	1
	950-464B	Decal "DANGER - Guard missing, do not operate" outer tube	1

## Use only original spare parts

*All rights reserved. It is unlawful to copy, reprint or use any of the information or details in this manual without the expressed written permission of the Company. Technical information provided in this manual is approximate, the Company reserves the right to modify or improve the models shown for technical or commercial purposes. Pictures in this manual do not necessarily show the machine as delivered.*

---

**BEFCO**<sup>®</sup>

P.O. Box 6036  
Rocky Mount, NC 27802-6036  
Tel.: 252.977.9920 - Fax: 252.977.9718  
[www.befco.com](http://www.befco.com)

