

# **BEFCO<sup>®</sup>**

## **Operator's Manual**

### **TURBO HOP**

**Pendular Spreader**

**314-121, 320-121, 325-121, 335-121**



The operator's manual is a technical service guide and must always accompany the machine.

**960-129B**

**December 1994**

# INTRODUCTION

Read this manual carefully. It will instruct you on how to operate and service your machine safely and correctly. Failure to do so could result in personal injury and/or equipment damage.



This SAFETY-ALERT symbol means  
**ATTENTION! BE ALERT!**  
YOUR SAFETY IS INVOLVED!

When you see this symbol, be alert to the possibility of serious bodily injury or death. Carefully follow the instructions in the safety message.

This machine is of metric design. However, for your convenience, most specifications are given in metric measurements with the customary US measurements following.



**CAUTION: All hardware is metric.**  
**Only metric tools should be used.**  
**Other tools that do not fit properly**  
**can slip and cause injury.**

Right-hand and left hand sides of the implement are determined by facing in the direction the implement will travel when going forward.

Warranty is provided for customers who operate and maintain their equipment as described in this manual. Warranty registration is accomplished by the dealer completing and forwarding the WARRANTY REGISTRATION FORM along with a copy of the dealer's invoice to BEFCO, Inc. It is in your best interest to insure that this has been done.

BEFCO's warranty does not cover the following:

- 1) Cleaning, transporting, mailing and service, call charges.
- 2) Normal wear items such as belts, blades, bearings, etc.
- 3) Depreciation of damage caused by normal wear, accidents, improper maintenance, improper protection or improper use.

See Complete Warranty found on the inside back cover.

Your authorized BEFCO Dealer has in stock genuine BEFCO parts. Only these BEFCO-approved replacements should be used.

Record your implement model and serial number in the space provided below. Your dealer needs this information to give you prompt, efficient service when you order parts.

<b>Model #:</b>	<input type="text"/>
<b>Serial #:</b>	<input type="text"/>

# DEALER CHECKLIST

To The Dealer:

Inspect the implement thoroughly after assembly to be certain it is functioning properly before delivering it to the customer. The following checklist is a reminder of points to cover. Check off each item as it is found satisfactory or after proper adjustment is made.

## PRE DELIVERY CHECKLIST

- Guards and shields properly fastened.
- Lubrication of grease fittings.
- All hardware properly tightened.
- All decals properly located and readable.
- Other adjustments for machine level, height, PTO length, etc.
- Overall condition (touch up any scratches, clean and polish).
- Test run, check for excessive vibration or overheating of bearings.
- Operator's Manual

DATE SET UP \_\_\_\_\_

SIGNATURE \_\_\_\_\_

# DELIVERY

Review the operator's manual with the customer. Explain the following:

- BEFCO warranty.
- Safe operation and service.
- Correct machine installation and operation.
- Daily and periodic lubrication and maintenance.
- Correct lubricants.
- Daily and periodic inspections.
- Removing and storing machine
- BEFCO parts and service.
- Have the customer write the machine model and serial number in space provided in manual introduction.
- Give customer the operator's manual and encourage the customer to read the manual carefully.
- Remove and file this page.

Warranty is not valid unless Registration Form in Operator's Manual is completed in detail and mailed to Befco, Inc., P.O. Box 6036, Rocky Mount, NC, 27802

DATE DELIVERED \_\_\_\_\_

SIGNATURE \_\_\_\_\_ (Dealer)

SIGNATURE \_\_\_\_\_ (End User)

Model No. \_\_\_\_\_

Serial No. \_\_\_\_\_

# CONTENTS

## Section I

Safety.....	6
-------------	---

## Section II Technical Specs/operation

Technical Specs.....	7, 8
Operation.....	9, 10, 11
Spreader Installation.....	12, 13, 14, 15
Lubrication.....	15
Assembly Sequence.....	16

## Section III

Delivery and Warranty Registration.....	17
Warranty.....	19

## Section IV Parts

Spreader.....	21
---------------	----

# SAFETY

## LEARN MACHINE SAFETY

Read this manual carefully before beginning any operations.

Allow only properly trained personnel to operate this machine.

Assure that you have a clean working area before starting operations.

Read and adhere to all safety and operating stickers on this machine.

Never attempt to make adjustments to this machine while the tractor engine is running.

Thoroughly inspect spreader before initial operation to assure that all packing materials, i.e. wire, bands, tape, etc., have been removed.

Be certain that all hardware is properly tightened.

Assure that the vehicle is in neutral position before starting engine.

Never allow passengers.

Never operate without proper shields in place.

Be alert for loose hardware and other hazards at frequent intervals.

Never attempt to clear machine of chunk material or clogged wet material by hand or tool while engine is on.

Spread pattern is from 58 degrees max. to 38 degrees min. however wind conditions may carry material into operator position. Always wear proper respirators when operating machine.

Never operate around bystanders. Material is disbursed at a high velocity and may cause injury. Discharge spout oscillates at a high speed and is difficult to see when in operation. Never allow anyone to approach the rear of the machine while engine is on.

Never leave spread swath adjustment wrench attached to spreader flywheel.

# TECHNICAL SPECS

## TECHNICAL FEATURES

- Durable anti-shock polyethylene hopper.
- Strong steel tubing frame protected by epoxy paint.
- Opening control disc in stainless steel with micro metric adjustment.
- Cast steel anti-wear agitator for granular materials.
- Heavy duty cast steel transmission with shielded PTO.
- Elastic anti-vibration joint to flywheel.
- Quick and precise manual flow adjustment.
- Spreading spout stamped in anti-shock nylon comes standard with interchangeable ends for both uniform spreading or localized spreading.

## OPTIONAL ACCESSORIES

- Hydraulic remote control for flow opening.
- Short steel spout for sand and salt.
- Agitator extension for powder material, salt and sand.

MODEL	HOPPER CAPACITY		SPREAD SWATH	HOPPER DIAMETER	LINKAGE CATEGORY	WEIGHT LBS.	
	CUBIC FEET	POUNDS				MACHINE	SHIPPING
314-121	13.92	891	20-66 ft	42.5"	I or II	306	318
320-121	19.28	1234	20-66 ft.	43.5"	I or II	330	345
325-121	24.64	1577	20-66 ft.	43.5"	I or II	352	365
335-121	32.14	2057	20-66 ft.	43.5"	I or II	374	388

**Note:** Poundage capacity calculated @ 13-13-13 material weight of 64 lbs. per cu. ft.

# TECHNICAL SPECS, CONT.

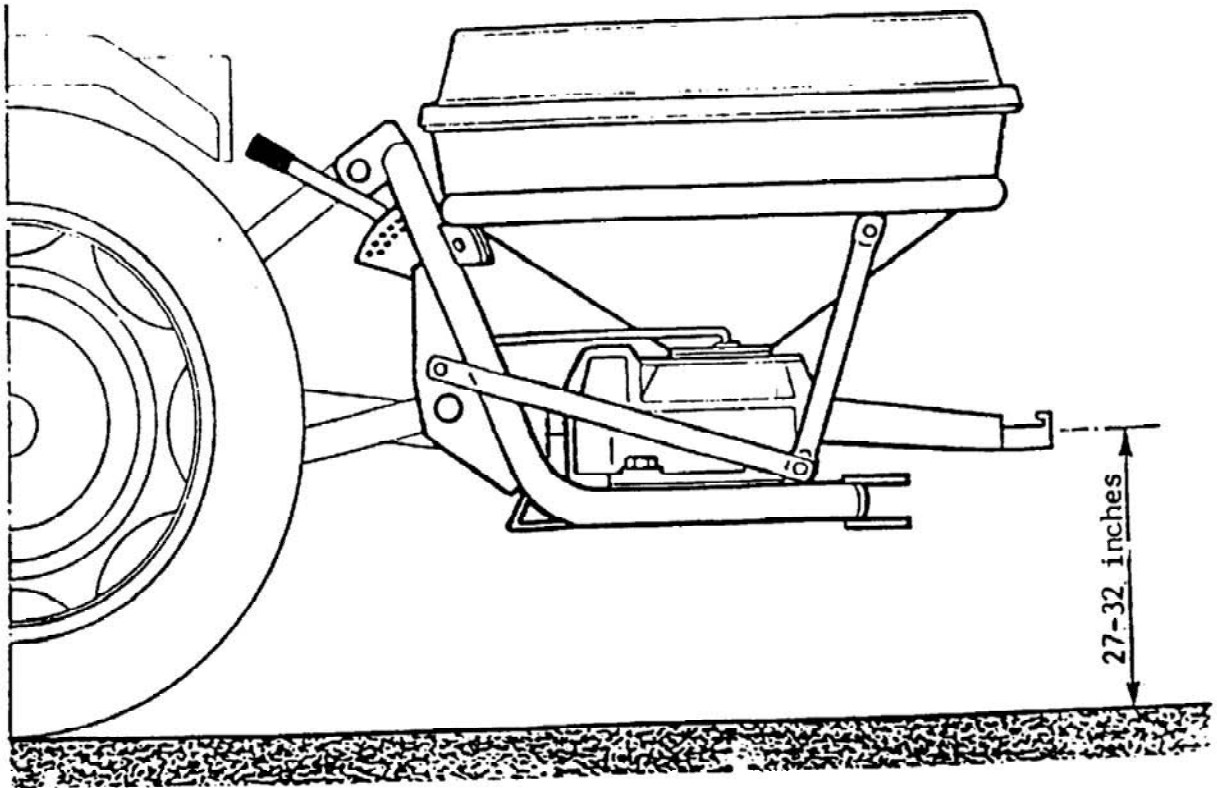
## TURBO SPREADING TABLES FOR MATERIAL

Material Type	PTO Speed	Spread Width	MPH	Pounds Per Acre @Lever Position						
				1	2	3	4	5	6	7
Coarse Grain	540	60	2.5	43	194	489	870	1,332	1,773	2,163
			3.8	29	129	325	580	887	1,182	1,442
			5.0	21	97	244	435	666	886	1,081
			6.3	17	77	195	348	532	708	864
			7.5	14	64	162	289	444	591	721
Medium Grain	540	50	2.5	48	226	568	990	1,455	1,953	2,489
			3.8	32	151	379	660	969	1,302	1,659
			5.0	24	113	283	494	728	977	1,243
			6.3	20	91	226	387	582	781	995
			7.5	16	76	189	330	485	591	721
Fine Grain	540	40	2.5	57	335	733	1,208	1,740	2,273	2,731
			3.8	37	223	498	805	1,161	1,515	1,821
			5.0	29	167	367	599	869	1,137	1,365
			6.3	22	134	293	482	696	909	1,093
			7.5	19	111	244	402	580	757	910
Med. Cristalline	540	46	2.5	80	432	869	1,495	2,125	2,701	3,225
			3.8	53	289	579	996	1,416	1,800	2,149
			5.0	40	216	435	746	1,063	1,350	1,612
			6.3	31	172	347	598	851	1,080	1,290
			7.5	27	144	289	498	709	900	1,074
Cal. Cyanide (Lime)	540	20	2.5	132	662	1,283	2,326	3,504	4,546	5,614
			3.8	87	441	846	1,551	2,335	3,030	3,743
			5.0	66	330	642	1,163	1,752	2,273	2,807
			6.3	52	265	513	931	1,401	1,819	2,245
			7.5	41	220	426	775	1,168	1,515	1,870
Ammonium Sulph.	540	27	2.5	146	827	1,609	2,829	3,844	4,827	6,108
			3.8	98	550	1,073	1,886	2,562	3,217	4,071
			5.0	73	413	804	1,414	1,922	2,413	3,054
			6.3	58	330	644	1,131	1,536	1,930	2,442
			7.5	49	275	536	942	1,281	1,608	2,035
Thomas Meal	540	20	2.5	249	1,010	1,867	3,124	5,139	7,004	8,497
			3.8	166	672	1,244	2,082	3,426	4,669	5,659
			5.0	125	504	933	1,561	2,570	3,502	4,249
			6.3	100	403	746	1,250	2,056	2,801	3,399



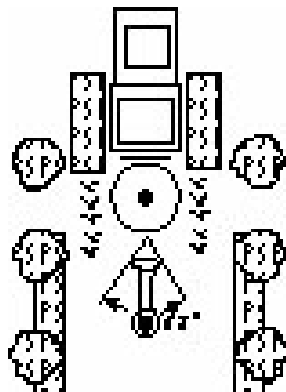
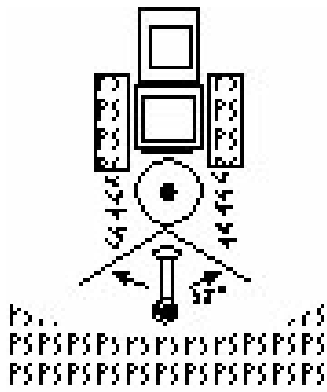
# OPERATION

The data listed in the spreading table has been obtained through tests. To make the table reading simple, we have limited it to few examples, which group-up materials and seeds which are different for type, quality, grain shape and weight. Because of the differences quoted, the data is to be taken as an indication and are not absolute. The spreading table data refers to a 540 R.P.M. drive and with the spreading disc at a height of about 27 - 32 inches. The tractor can be driven at a speed different from the one indicated in the table. It must be kept in mind that the increasing or decreasing the speed, the quantity of material to be spread per acre decreases or increases.

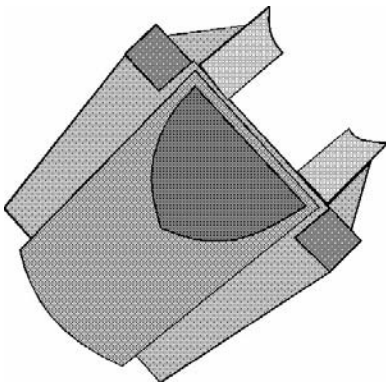


Before operating the material spreader make certain that the spreading tube is in the horizontal position and at about 27 - 32 inches from the ground.

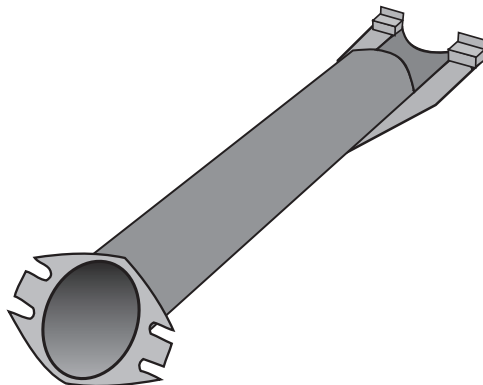
# OPERATION, CONT.



The ending part of the pendulum spout is replaceable; this enables you to have two types of spreading:



A



B

## A - UNIFORM SPREADING SPOUT

The spout attachment illustrated above is for uniform spreading of fertilizer, seed, and other types of material listed on the spread rate chart. It gives uniform disbursement across the full working width.

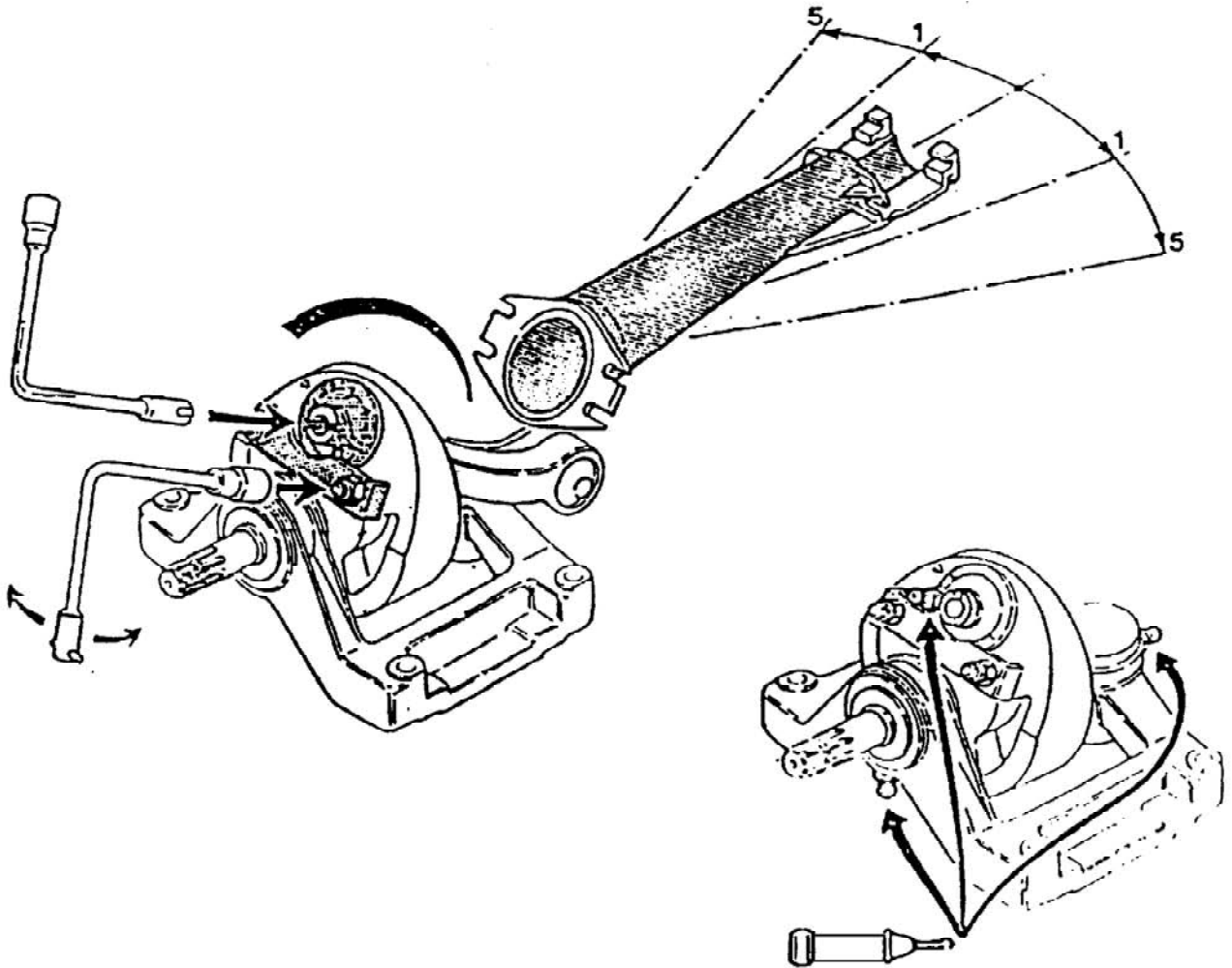
## B - LOCALIZED SPREAD SPOUT

The spout attachment illustrated above is for localized spreading of fertilizer, seed, and other types of material listed on the spread rate chart. This spout is used to distribute material to the left and right side of the spread swath only with no material distributed to the middle.

To attach these spreading spouts, slide the spout into the two grooves provided at the end of the pendulum spout. Push down the rear of the spreading spout until the retaining clips snap over the spreading spout and lock it in place. To remove pull back the retaining clips and lift the back end of the spreading spout up and out. Due to the tight fit, a flat head screw driver may be used to pry the spout up.

# OPERATION, CONT.

An adjuster has fitted to the spreading unit and this allows you to adjust the spout stroke from 58° max. to 38° min. This enables you to increase or reduce the spreading width according to the working conditions, or according to the type of material being spread.



It is advisable to grease the moving parts often.

# SPREADER INSTALLATION

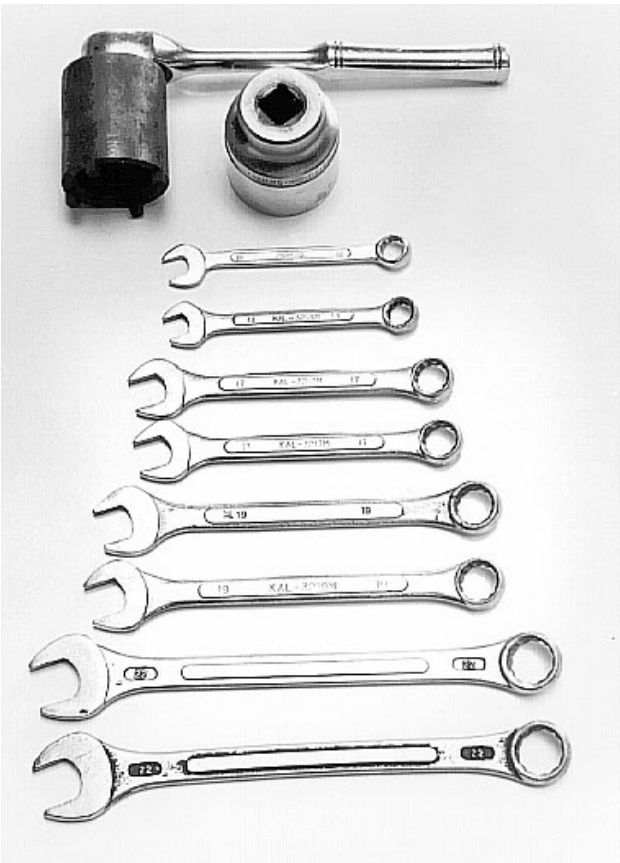
**Note: All bolts and nuts are metric.**

Photo to the left shows all parts before assembly.

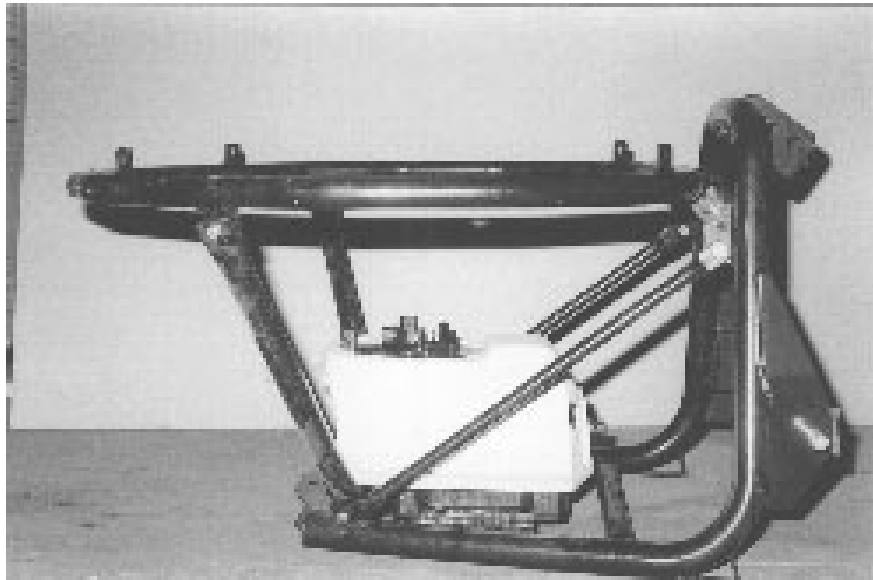
Bottom left photo shows tools needed - they are:

- 2 - 22 mm wrenches
- 2 - 19 mm wrenches
- 2 - 17 mm wrenches
- 2 - 13 mm wrenches
- 1 - 50 mm socket
- 1 - 40 mm spanner socket or standard type spanner wrench

Photo in bottom right: bolt fly wheel assembly to base frame using 4 bolts (Ref #83), 4 washer (Ref #8), and 4 nuts (Ref #7). Attach spout to fly wheel using 4 bolts (Ref #33) and 4 nuts (Ref #60).



# SPREADER INSTALLATION, CONT.



Attach white plastic cowling (Ref #29) to threaded fly wheel base using 4 bolts (Ref #30) and 4 washers (Ref #31 ).

Bolt hopper ring (Ref #6) to base frame using 4 bolts (Ref #5), 4 washers (Ref #3), and 4 nuts (Ref #2). Attach the 2 vertical support arms (Ref #81 ) and the right and left tie rods (Ref # 84 and 79) to the frame and ring using 6 bolts (Ref #82 and #83, see drawing), 6 washers (Ref #8), and 6 nuts (Ref #7).

Attach the dosing disc (Ref #23) to the bottom outside of the hopper buy inserting the agitator bush-guide (Ref # 22) from the inside of the hopper. Slide dosing disc over bush-guide, place adjusting ring (Ref #24) and screw in ring nut (Ref. #25). The gate on dosing disc should be closed and adjusted arm of disc should point to the left when facing discharge end of machine.

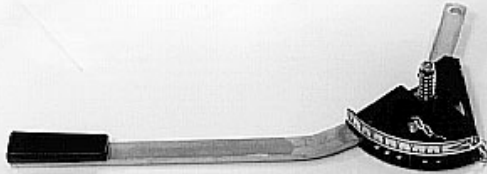


**Note: It is very important to the proper operation of the machine to tighten the ring nut as tight as possible.**

# SPREADER INSTALLATION, CONT.



Selector assembly consists of 3 parts: the selector- (Ref #75), the adjustment lever (Ref #71) and the hand grip (Ref #72).



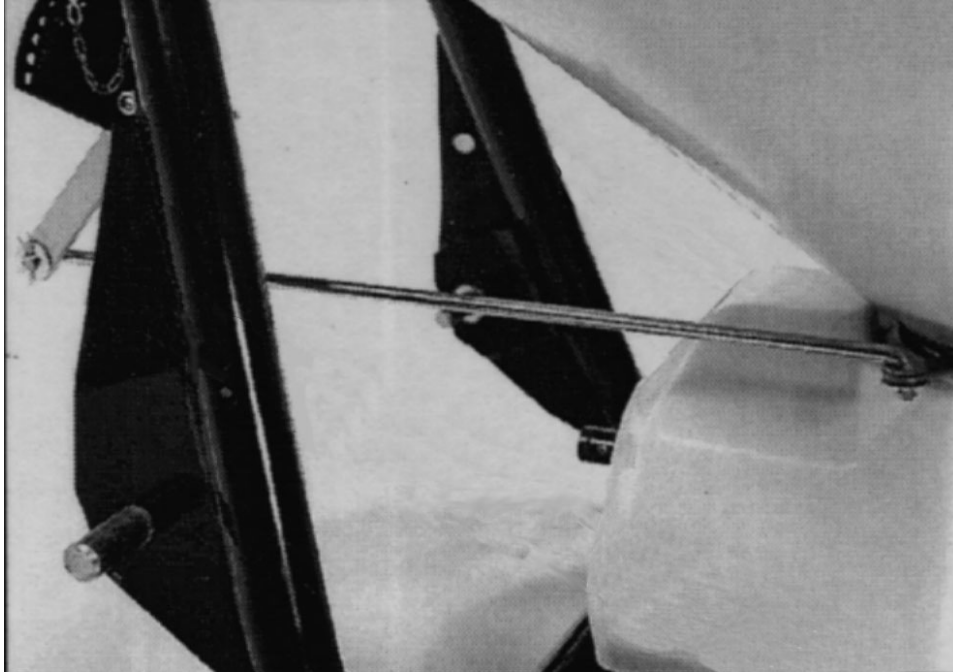
Insert adjustment lever into selector and run bolt (Ref #69) right to left through bake lite disc. (Ref #70), then through selector and handle (see drawing enclosed). Slide compression spring (Ref. #73) onto bolt, place washer (Ref #10) and tighten nut (Ref #60). Insert stroke stop pin (Ref #74) and attach "R" shape pin to secure in place.

Attach entire assembly to frame by using 2 bolt (Ref #80), 4 washers (Ref #10), and 2 nut (Ref #15).

Mount hopper to frame using 4 bolts (Ref #20), 4 hopper washer (Ref #21), 4 reg. washers (Ref #4), 4 backing washers (Ref #3), and 4 nuts (Ref #2).



# SPREADER INSTALLATION, CONT.

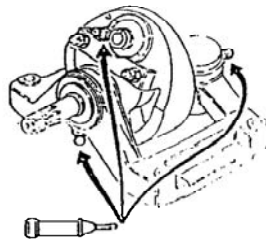


Attach adjustment lever rod (Ref #26) to bottom of adjustment arm using 2 “R” shaped pin and 2 washers (Ref #28).

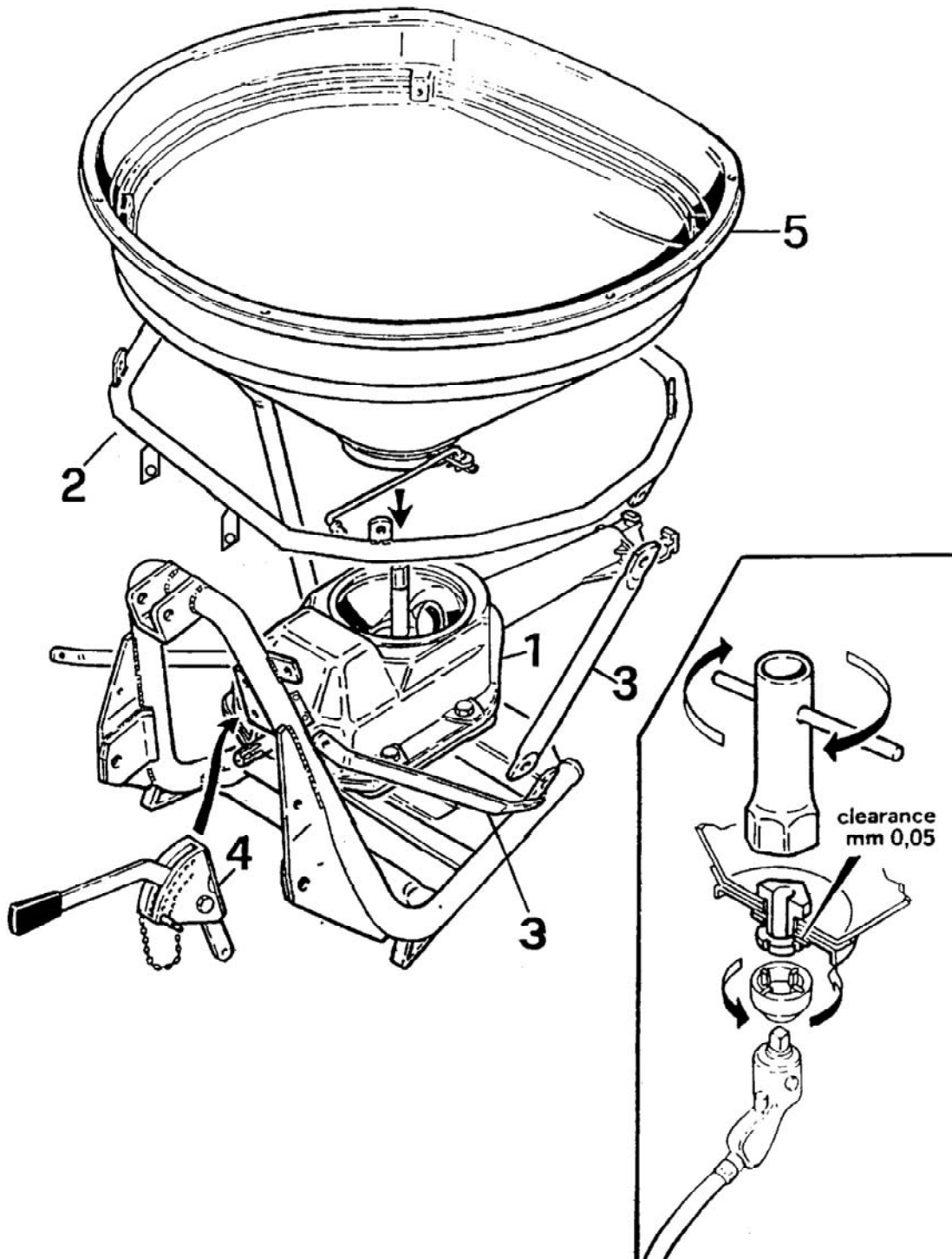
## LUBRICATION

There are only three grease points on the hopper. They should be greased every 10 to 12 hours of operation.

(For locations of grease points see diagram below)



# ASSEMBLY SEQUENCE



## Assembly Sequence

1. Pendulum Spout Unit
2. Hopper Ring
3. Tie-Rods and Supports
4. Adjusting Unit
5. Hopper
6. Extension

Preliminary Assembly



# DELIVERY AND WARRANTY REGISTRATION

BEFCO, Inc.  
P. O. Box 6036  
Rocky Mount, NC 27802-6030  
(919) 977-9920

Date \_\_\_\_\_

Dealer \_\_\_\_\_ Acct. No. \_\_\_\_\_  
Street or Route No. \_\_\_\_\_ County \_\_\_\_\_  
Town \_\_\_\_\_ State \_\_\_\_\_ Zip \_\_\_\_\_  
Date of Delivery \_\_\_\_\_ Invoice No. \_\_\_\_\_  
Model No. \_\_\_\_\_ Serial No. \_\_\_\_\_

Retail Customer \_\_\_\_\_  
Street or Route No. \_\_\_\_\_  
Town \_\_\_\_\_ State \_\_\_\_\_ Zip \_\_\_\_\_  
Phone \_\_\_\_\_

**PRE-DELIVERY CHECK LIST**

- OIL IN GEARBOX
- GREASED FITTINGS
- ALL HARDWARE TIGHT
- PTO LENGTH
- ATTACHED UNIT TO TRACTOR YES/NO
- FIELD ADJUSTED YES/NO
- TEST RUN DRY/INFIELD
- FRICTION CLUTCH
- SHEAR PIN/SIZE \_\_\_\_\_
- HARDNESS \_\_\_\_\_
- INSTRUCTION STICKER
- OPERATOR'S MANUAL

The Machine described above, had been prepared for delivery according to the Pre-Delivery Check List and the Customer has been instructed in its care and operation and the condition of warranty.

Inspected By: \_\_\_\_\_

Date: \_\_\_\_\_

\_\_\_\_\_  
Dealer's signature

TRACTOR MAKE: \_\_\_\_\_

MODEL \_\_\_\_\_ HP \_\_\_\_\_

Type of Operation: Hobbyist, Landscaper  
Nursery, Commercial Vegetable, Vineyard,  
Orchard, Row crops, Municipality, Other

Approx. No. of acres machine will be used on annually \_\_\_\_\_

I hereby acknowledge that:

I have received and accepted delivery of the Machine described.

The equipment was checked thoroughly for loose or missing parts and has been adjusted in accordance with the PRE-DELIVERY CHECK LIST.

I have read and understand the nature and extent of the Warranty and understand clearly that there were and are no other representations or warranties, either express or implied, made by anyone. I have been advised on proper operation, maintenance and lubrication procedures of this equipment.

I have been instructed on and do understand the application, limitations and capacities this equipment was designed and recommended for, all as described in the Owner-Operator's manual and literature published by BEFCO.

CUSTOMER SIGNATURE \_\_\_\_\_

DATE: \_\_\_\_\_

----- FOLD AND STAPLE -----

AFFIX  
STAMP  
HERE

**BEFCO**  
P. O. Box 6036  
Rocky Mount, NC 27802-6036

**Attention: Warranty Department**

# WARRANTY

BEFCO's responsibility will be limited to the substitution of the acknowledged defective merchandise to the same place of delivery as the previous one was supplied.

## 1. LIMITED WARRANTY

BEFCO Inc. herein referred to as the Company, warrants its machines and related accessories, hereafter referred to as the Machine, to be free from defects in material and workmanship, for a period of twelve (12) months from the date of invoice to the first registered owner; this limited warranty does not apply to and excludes shear pins, oil, grease, tires, tubes, hydraulic hoses, knives, and PTO shafts.

Labor will be reimbursed at \$17.00 per hour based on BEFCO's time schedule.

Cost of transport to the servicing dealer is the responsibility of the customer.

Warranty coverage shall not be transferable from the first owner to any subsequent owner.

## 2. DISCLAIMER OF ALL OTHER WARRANTIES AND REMEDIES.

NEITHER THE COMPANY NOR ANY COMPANY AFFILIATED WITH THE COMPANY MAKES ANY WARRANTIES, REPRESENTATIONS, OR PROMISES, EXPRESSED OR IMPLIED, AS TO THE QUALITY, PERFORMANCE OR APPLICATION OF ITS PRODUCTS OTHER THAN THOSE SET FORTH HEREIN AND DOES NOT MAKE ANY IMPLIED WARRANTY OF MERCHANTABILITY OR FITNESS.

THE ONLY REMEDIES THE PURCHASER HAS IN CONNECTION WITH THE BREACH, OR PERFORMANCE OF ANY WARRANTY ON THE COMPANY'S MACHINE ARE THOSE SET FORTH HEREIN. IN NO EVENT WILL THE DEALER, THE COMPANY, OR ANY COMPANY AFFILIATED WITH COMPANY BE LIABLE FOR:

(a) INJURIES OR DAMAGES OF ANY KIND OR NATURE, DIRECT, CONSEQUENTIAL OR CONTINGENT TO PERSON OR PROPERTY.

(b) ANY EXPENSES INCURRED BY THE OWNER TO REPAIR, REPLACE OR REWORK ANY ALLEGEDLY DEFECTIVE ITEM.

(c) ANY LOSS, COST, FORFEITURE OR DAMAGES (INCLUDING LOSS OF PROFITS; LOSS OF CROPS; LOSS BECAUSE OF DELAY IN FIELD OPERATIONS; ANY EXPENSE OR LOSS INCURRED FOR LABOR, SUPPLIES, SUBSTITUTE MACHINE RENTAL; LIABILITIES OR DAMAGES FOR ANY OTHER REASONS) WHETHER DIRECT OR INDIRECT, AND WHETHER OR NOT RESULTING FROM OR CONTRIBUTED TO BY THE DEFAULT OR NEGLIGENCE OF THE COMPANY, ITS AGENTS, EMPLOYEES AND SUBCONTRACTORS WHICH MIGHT BE CLAIMED AS A RESULT OF THE USE OR FAILURE OF THE EQUIPMENT DELIVERED.

THE COMPANY'S LIABILITY BASED ON THIS LIMITED WARRANTY OR ANY OTHER APPLICABLE LAWS SHALL BE LIMITED TO REPLACEMENT OR REFUND OF THE PURCHASE PRICE OF THE PRODUCT.

THE LIMITED WARRANTY EXTENDED HEREIN GIVES YOU SPECIFIC RIGHTS AND YOU MAY ALSO HAVE OTHER RIGHTS WHICH VARY FROM STATE TO STATE. NEITHER THE DEALER NOR THE COMPANY PERSONNEL HAS THE AUTHORITY TO MAKE ANY REPRESENTATION OR TO MODIFY THE TERMS AND LIMITATIONS OF THIS WARRANTY IN ANY WAY.

OTHER THAN THE LIMITED WARRANTY EXTENDED HEREBY. THERE IS NO OTHER EXPRESS WARRANTY IN CONNECTION WITH THE DESIGN, SAFETY OR USE OF ANY OF THE COMPANY'S PRODUCTS EXCEPT AS TO TITLE.

ALL IMPLIED WARRANTIES ARE EXPRESSLY DISCLAIMED PURSUANT TO THE TERMS OF THE WARRANTY.

## 3. CUSTOM WORK

If the machine is used for commercial purposes such as custom work the period warranted for the Machine is limited to six (6) months from the date of delivery to the first registered owner and does not cover any labor charges incurred.

## 4. RENTAL

If the Machine is used for rental purposes the period warranted for the Machine is limited to thirty (30) days from the date of delivery to the first registered owner and does not cover any labor charges incurred.

## 5. REGISTRATION

In order to qualify for coverage on this limited warranty, the product and name of the original purchaser must be registered with the Company by mailing a completed Machine Delivery and Warranty Registration along with a copy of the dealer's invoice to the first registered owner to the Company within fourteen (14) days after the date of delivery to the original purchaser.

## 6. WARRANTY SERVICE

Warranty Service must be performed by a dealer authorized by BEFCO. If the warranty service requested is approved, the owner shall pay only for labor beyond the rate allowed, for overtime labor, and for any mileage charge for transporting the equipment to and from the dealer's shop. It is assumed that the dealer has the appropriate general and special tools to service the machine. Time required for replacement of knives, oil, grease and to remove excessive dirt from the Machine is not subject to reimbursement by the Company. The owner is required to clean the Machine before presenting it to the dealer for service work. The machine must be delivered within thirty (30) days after failure date by the owner to the dealer to be eligible for warranty consideration.

## 7. UNAPPROVED SERVICE OR MODIFICATION

All obligations of the Company under this limited warranty shall be terminated if:

(a) Proper Service and Operation Instructions as outlined the Owner's manual and on the instruction sticker on the Machine, are not followed.

(b) The Machine is modified or altered in any way not approved by the Company.

(c) The Company does not receive a copy of the dealer's invoice to the first registered owner within fourteen (14) days from the date of delivery.

(d) The Company has not been paid in full, by the dealer, for the machine.

## 8. ACCIDENTS AND NORMAL MAINTENANCE

This limited warranty covers defective material and workmanship. It does not cover depreciation or damage caused by normal wear, accidents, improper maintenance, improper protection or improper use. The costs of normal maintenance or repairs for accidents or improper use, and related labor will be borne by the owner.



# **BEFCO®**

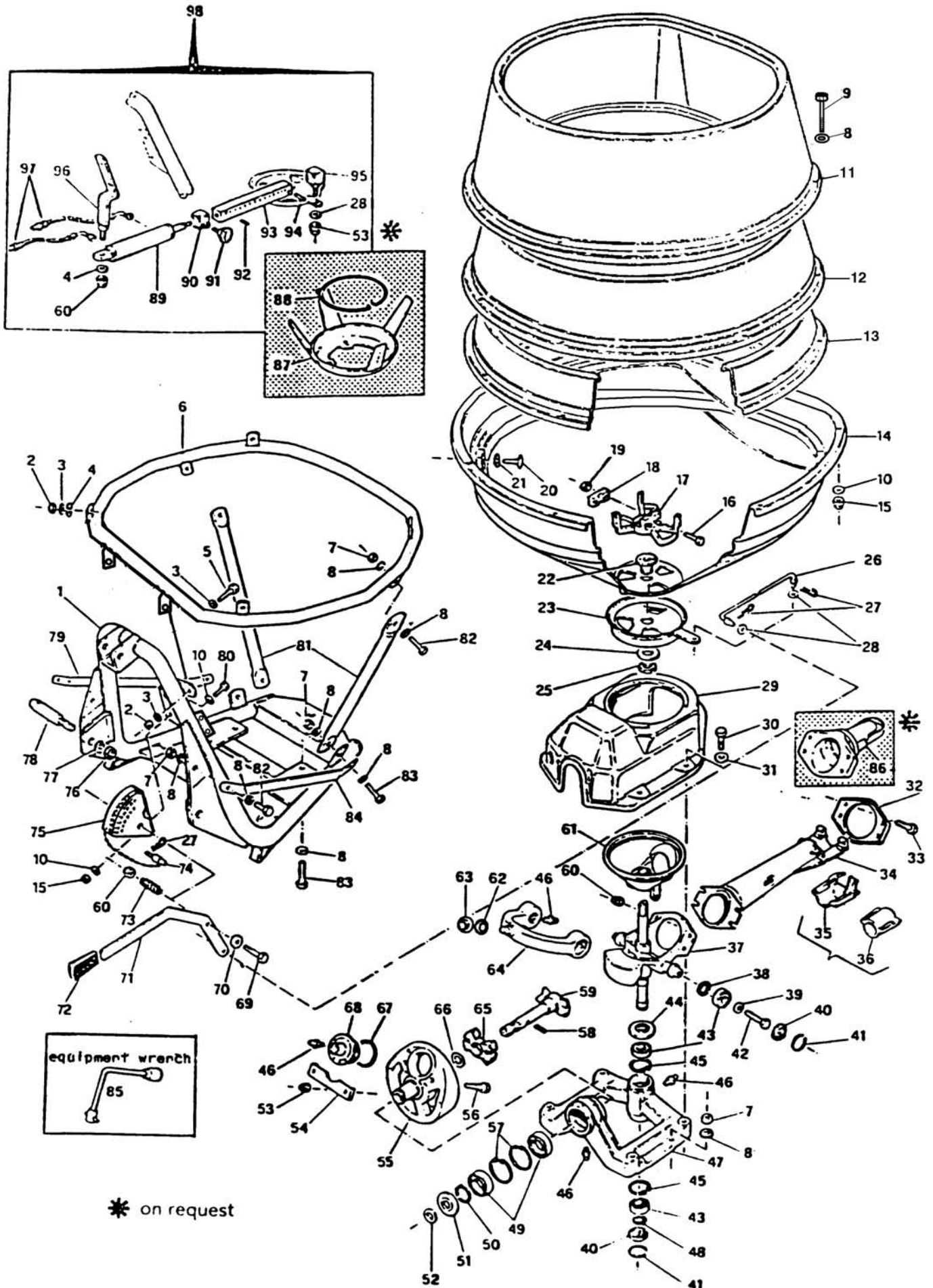
## **Parts Manual**

# **TURBO HOP**

**Pendular Spreader**

**314-121, 320-121, 325-121, 335-121**

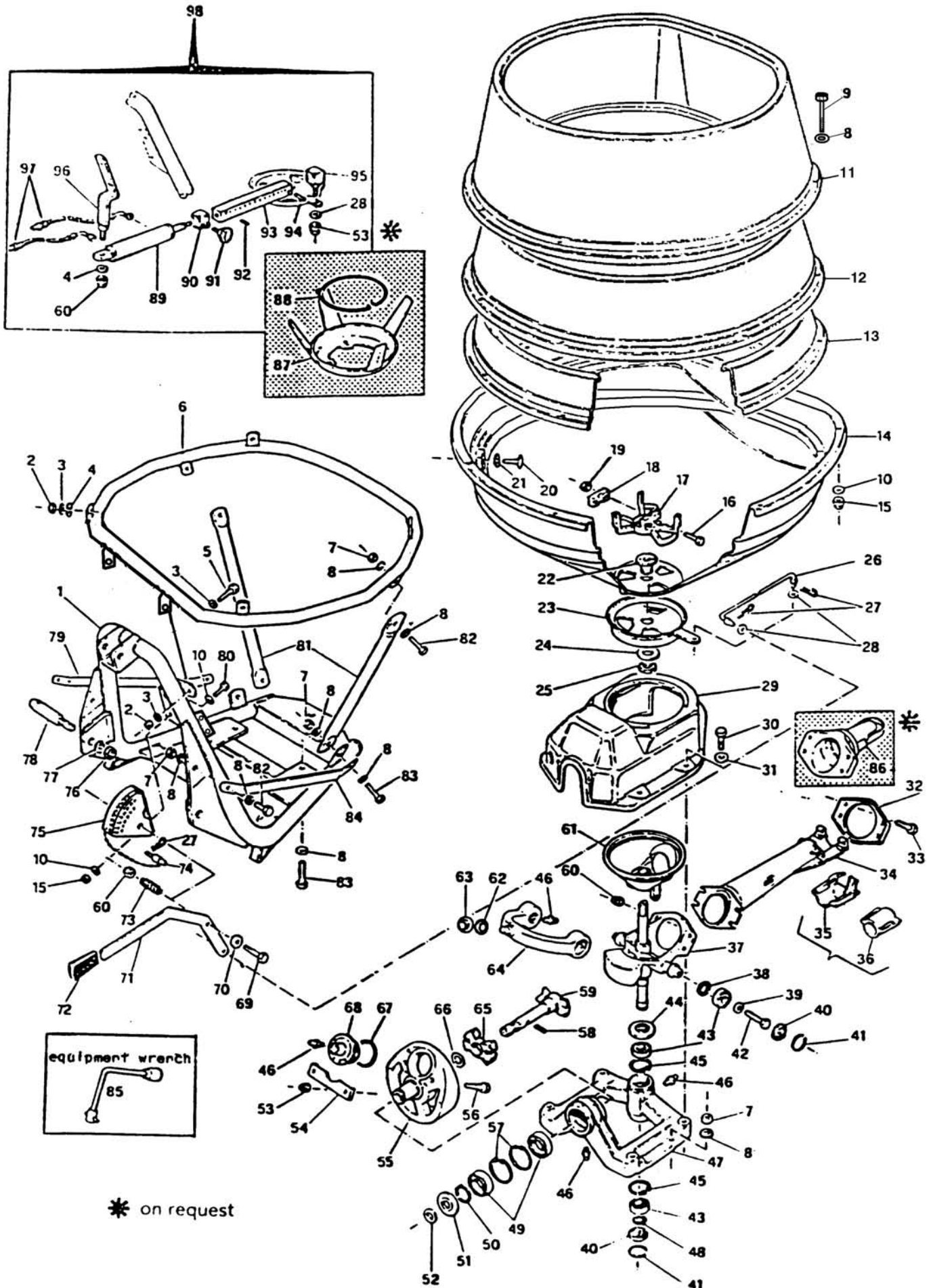




\* on request

## 314-121, 320-121, 325-121, 335-121

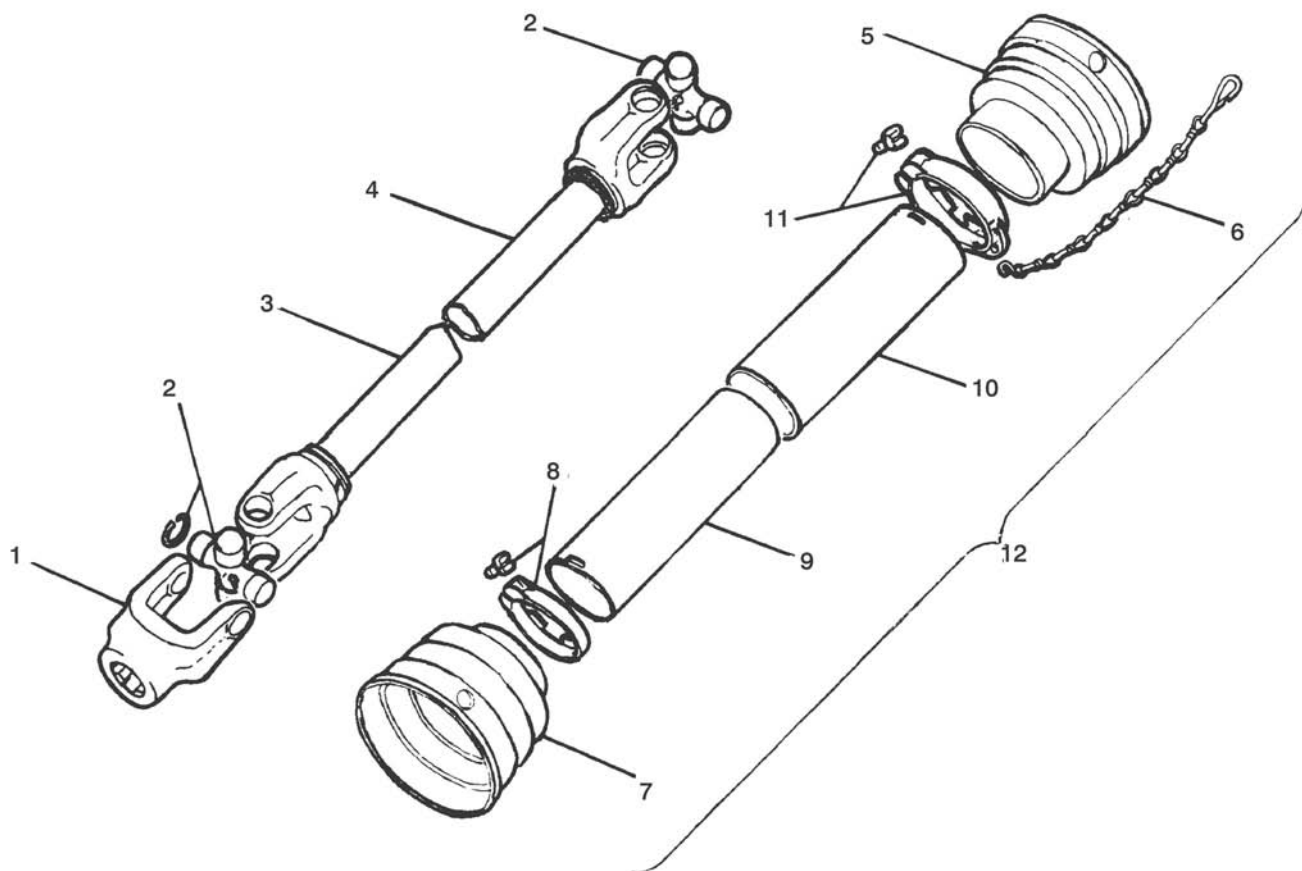
Ref.	Part #	Description	Qty.
1	503-259B	Frame 314, 320, 325, 335	1
2	001-5360	Nut HH M10-1.50 C6 N MD	8
3	501-901B	Washer, external tooth Ø10 Z	12
4	000-2034	Washer, flat Ø10 Z	4
5	009-1281	Bolt HH M10-1.50x35 C8.8 Z F	4
6	503-260B	Hopper ring	1
7	501-903B	Nut M12	12
8	501-904B	Washer Ø12	20
9	501-905B	Bolt M8x30	8
10	501-906B	Flat washer Ø8	20
11	501-907B	Extension 906 (335)	-
12	501-908B	Extension 706 (325)	-
13	501-909B	Extension 506 (320)	-
14	501-910B	Hopper (314)	1
	501-986B	Hopper w/stainless steel	1
15	009-1384	Nut ES M08-1.25 Z TK	10
16	009-1128	Bolt HH M14-2.00x65 C8.8 Z P	2
17	501-911B	Agitator	1
18	503-204B	Agitator fixing plate	1
19	000-1177	Nut HH M14-2.00 C6 Z MD	2
20	501-913B	Bolt M10x30	4
21	501-914B	Washer for hopper fixing	4
22	501-915B	Agitator bush-guide	1
23	501-916B	Dosing disc	1
24	501-917B	Adjusting ring	1
25	501-918B	Ring nut	1
26	501-919B	Adjustment lever	1
27	501-920B	Cotter pin	3
28	501-921B	Shim washer Ø12	2
29	501-922B	Guard	4
30	003-3176	Bolt HH M10-1.50x25 C8.8 Z F	4
31	003-0157	Washer, flat Ø10 Z	4
32	501-924B	Coupling flange	1
33	501-925B	Bolt HH M10-1.50x50 C8.8 Z P	4
34	501-926B	Pendulum spout	1
35	501-927B	Cup	1
36	501-928B	Bushing	1
37	501-929B	Spout mounting	1
38	501-930B	Dust fender	2
39	501-931B	Washer	2
40	501-932B	Fork guard	3
41	501-933B	Ring BR62	3
42	501-934B	Bolt M12x80	2
43	501-935B	Bearing 6206	4
44	501-936B	Shaft cover	1
45	501-937B	Snap ring, inner Ø62	2
46	005-1129	Grease fitting M6-1.00	5
47	501-938B	Spread-unit mounting	1
48	001-0122	Snap ring, outer Ø30	1
49	501-940B	Bearing 6011	2
50	501-941B	Snap ring, outer Ø55	1





314-121, 320-121, 325-121, 335-121

Ref.	Part #	Description	Qty.
51	501-942B	Front cover	1
52	501-943B	Front washer	1
53	001-3345	Nut ES M12-1.75 Z TK	2
54	501-944B	Fixing plate	1
55	501-945B	Flywheel	1
56	501-946B	Bolt M12-1.75x55 Z P	2
57	501-947B	Snap ring, inner Ø90	2
58	000-011E	Roll pin Ø8x50	1
59	502-537B	Coupling shaft	1
60	001-5237	Nut ES M10-1.50 Z TN	5
61	501-949B	Cup	1
62	501-950B	Fork guard	1
63	000-6634A	Bearing 6205	1
64	501-951B	Fork	1
65	501-952B	Rubber shock absorber	1
66	501-953B	Washer	1
67	501-954B	Ring OR 2350	1
68	501-955B	Stroke adjuster	1
69	501-956B	Bolt M10x65	1
70	501-957B	Bakelite disc	1
71	501-958B	Adjustment lever	1
72	501-959B	Hand grip	1
73	501-960B	Compression spring	1
74	501-961B	Stroke stop pin	1
75	501-962B	Selector	1
76	005-0031	Nut HH M24-2.00 C6 Z MD	2
77	005-0033	Washer, lock Ø24	2
78	501-965B	Coupling pin	2
79	503-263B	Right tie rod	1
80	009-1446	Bolt HH M08-1.25x25 C8.8 Z F	2
71	503-261B	Vertical support	2
82	000-7255	Bolt HH M12-1.75x35 C8.8 Z F	4
83	000-7716	Bolt HH M12-1.75x45 C8.8 Z F	6
84	503-262B	Left tie rod	1
85	501-969B	Adjustment wrench	1
86	501-970B	Sand spout	1
87	501-971B	Agitator rim	1
88	501-972B	Agitator fixing ring	1
89	501-973B	Cylinder	1
90	501-974B	Slider	1
91	501-975B	Hand wheel Ø8x20	1
92	501-976B	Roll pin Ø5x16	1
93	501-977B	Scale	1
94	502-584B	Roll pin Ø8x35	1
95	501-979B	Fixed slider	1
96	501-980B	Cylinder support	2
97	501-981B	Oil duct	-
98	501-982B	Hydraulic remote control	1
	501-983B	Gearbox complete	-
	501-987B	Stainless steel ring	-



Ref.	Part #	Description	Qty.
1	021-001E	Yoke (tractor end)	1
	011-068B	Yoke, round bore (implement end)	1
2	011-130E	Cross & bearing M22x54	2
3	210-908E	Inner tube & yoke	1
4	211-008E	Outer tube & yoke	1
5	012-013E	Guard cone, outer tube	2
6	016-025E	Safety chain	2
7	012-012E	Guard cone, inner tube	1
8	012-006E	Locking collar, inner tube	1
9	111-209E	Shield, inner tube	1
10	111-109E	Shield, outer tube	1
11	012-007E	Locking collar, outer tube	1
12	210-209E	Shield, complete	1
13	012-007E	Bolt, locking collar	6
	948-005B	Driveline, complete T10	1
	026-004E	Push pin set	2
	503-165B	Bolt M10x50 (implement yoke)	1

## **Use only original spare parts**

*All rights reserved. It is unlawful to copy, reprint or use any of the information or details in this manual without the expressed written permission of the Company. Technical information provided in this manual is approximate, the Company reserves the right to modify or improve the models shown for technical or commercial purposes. Pictures in this manual do not necessarily show the machine as delivered.*

BEFCO 314-121, 320-121, 325-121, 335-121 (US) 12-1994  
Printed in the USA, May 19, 2010

---

**BEFCO**<sup>®</sup>

P.O. Box 6036  
Rocky Mount, NC 27802-6036  
Tel.: 252.977.9920 - Fax: 252.977.9718  
[www.befco.com](http://www.befco.com)

